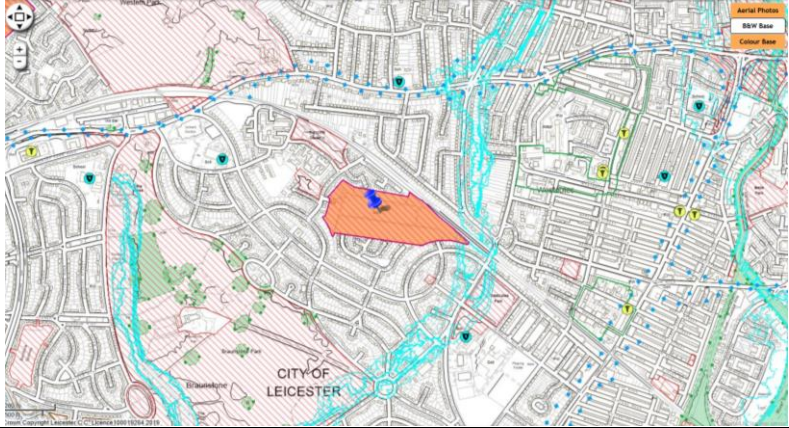


revised Aug. 2024

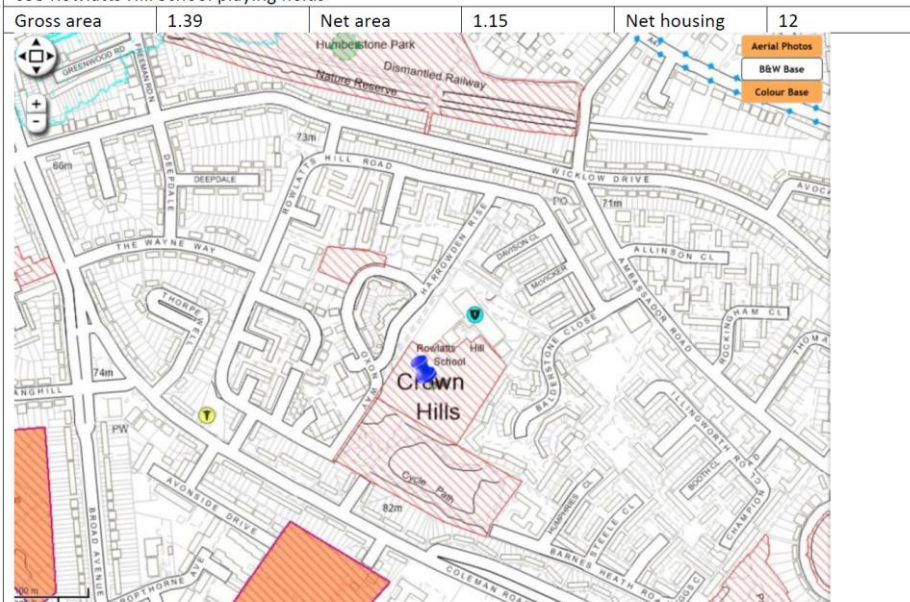
643 Quakesick Spinney					
Gross area	0.9	Net area	0.74	Net housing	22
Distance to GP (m)	547				
Parks quantity/quality	Mature woodland				
Sports	No comment				
Distance to Green Wedge (m)	249				
Distance to allotments (m)	1765				
Distance to SSSI	920				
Distance to Local Wildlife Site (m)	0 – site is a LWS				
Biodiversity comments	Wooded area. LWS and TPO. Many old mainly poplar and willow species. Area used to be a wetland until the development of the adjacent areas.				
Archaeology comments	No comment				
Heritage comments	No comment				
In Conservation Area	No				
In Air Quality Management Area	No				
Distance to water body	0 – drains on site				
Flood zone	1				
Previously developed land	Greenfield				
Distance to train station (m)	>2km				
Distance to primary school (m)	380				
Index of multiple deprivation	3				
Mitigation	Local Wildlife Site Access to open space Drains on site re. runoff, contamination				

645 Randliffe Crescent allotments					
Gross area	8.08	Net area	5.05	Net housing	152
					
Distance to GP (m)	851				
Parks quantity/quality	Allotments are to be retained as there is a statutory requirement to provide Leicester's population with sufficient access to allotment space. There is a need to ensure that the standards of provision are maintained for the future needs of the population which will alter as a result from new housing areas.				
Sports	No comments				
Distance to Green Wedge (m)	>2km				
Distance to allotments (m)	0 – site is allotments				
Distance to SSSI	>2km				
Distance to Local Wildlife Site (m)	460				
Biodiversity comments	Not designated but currently allotments of intrinsic value and difficult to mitigate against loss of biodiversity. Important in ecological network - next to railway line				
Archaeology comments	Near Neolithic and Iron Age settlement sites				
Heritage comments	c. 120 metres from the locally listed Westcotes Park				
In Conservation Area	No				
In Air Quality Management Area	No				
Distance to water body	>50 at nearest point - ditch				
Flood zone	1 except for about 5% in zone 2, 3a, 3b at E corner				
Previously developed land	Greenfield				
Distance to train station (m)	>2km				
Distance to primary school (m)	552				
Index of multiple deprivation	1				
Mitigation	Allotments Biodiversity Archaeological heritage Water quality in ditch				

649 Red Hill allotments		Net area	Net housing
Gross area	3.96		
Distance to GP (m)	1300		
Parks quantity/quality	Allotments are to be retained as there is a statutory requirement to provide Leicester's population with sufficient access to allotment space. There is a need to ensure that the standards of provision are maintained for the future needs of the population which will alter as a result from new housing areas.		
Sports	No comment		
Distance to Green Wedge (m)	0 – adjacent		
Distance to allotments (m)	0 site is allotments		
Distance to SSSI	>2km		
Distance to Local Wildlife Site (m)	0 site is partly LWS		
Biodiversity comments	Local Wildlife Site		
Archaeology comments	Romano-British cemetery; LWS		
Heritage comments	Adjacent the Grade II Listed Mobil Forecourt Canopies, c. 110 metres from the Locally Listed Belgrave Cemetery		
In Conservation Area	No		
In Air Quality Management Area	no		
Distance to water body	477 - ditch		
Flood zone	1		
Previously developed land	Greenfield		
Distance to train station (m)	>2km		
Distance to primary school (m)	853		
Index of multiple deprivation	1		
Mitigation	Not well related to services, on edge of city Allotments Local Wildlife Site Archaeological assets		

651 Rolleston primary school playing fields					
Gross area	1.7	Net area	1.4	Net housing	42
Distance to GP (m)	751				
Parks quantity/quality	No comment				
Sports	In active use as school playing field				
Distance to Green Wedge (m)	1575				
Distance to allotments (m)	1466				
Distance to SSSI	>2km				
Distance to Local Wildlife Site (m)	414				
Biodiversity comments	BES - contains broadleaf woodland - next to canal and railway - part of ecological network				
Archaeology comments	No comment				
Heritage comments	Adjacent the mid-1950s Rolleston primary School, much altered				
In Conservation Area	No				
In Air Quality Management Area	No				
Distance to water body	14m from edge of site to ditch (canal?)				
Flood zone	1				
Previously developed land	Greenfield				
Distance to train station (m)	>2km				
Distance to primary school (m)	0 - adjacent				
Index of multiple deprivation	1				
Mitigation	School playing fields Woodland Ditch re. runoff, contamination				


653 Rowlatts Hill School playing fields



Distance to GP (m)	293
Parks quantity/quality	
Sports	
Distance to Green Wedge (m)	1535
Distance to allotments (m)	246
Distance to SSSI	>2km
Distance to Local Wildlife Site (m)	967
Biodiversity comments	BES - forms part of ecological network and connects onto POS.
Archaeology comments	Remnant ridge and furrow
Heritage comments	no comment
In Conservation Area	no
In Air Quality Management Area	no
Distance to water body	0 -pond on site
Flood zone	1
Previously developed land	Greenfield
Distance to train station (m)	>2km
Distance to primary school (m)	95 school adjacent
Index of multiple deprivation	1
Mitigation	Ecological network Archaeological assets Pond on site re. runoff


655 Rushey Mead Green Wedge North					
Gross area	15.72	Net area		Net housing	94
Distance to GP (m)	1315				
Parks quantity/quality	No comment				
Sports	No comment				
Distance to Green Wedge (m)	0 – site is Green Wedge				
Distance to allotments (m)	518				
Distance to SSSI	>2km				
Distance to Local Wildlife Site (m)	0 – most of site is LWS				
Biodiversity comments	LNR and LWS, eutrophic lake (priority habitat), meadows, rare waterfowl. Floods regularly. Possible Biodiversity Opportunity Site for development nearby e.g. Redhill Allotments				
Archaeology comments	Previously identified as an area with archaeological potential; BES and LWS				
Heritage comments	No comment				
In Conservation Area	No				
In Air Quality Management Area	No				
Distance to water body	0 – River Soar adjacent				
Flood zone	Most of site is flood zone 3b				
Previously developed land	Greenfield				
Distance to train station (m)	>2km				
Distance to primary school (m)	1157				
Index of multiple deprivation	3				
Mitigation	Green Wedge Local Wildlife Site Archaeological potential River Soar re. runoff, contamination Flooding				

656 Rushey Mead Green Wedge South					
Gross area	10.58	Net area		Net housing	318
Distance to GP (m)	883				
Parks quantity/quality	No comment				
Sports	No comment				
Distance to Green Wedge (m)	0 – site is Green Wedge				
Distance to allotments (m)	441				
Distance to SSSI	>2km				
Distance to Local Wildlife Site (m)	0 – about half of site is LWS				
Biodiversity comments	LNR and LWS, ponds, meadows, rare waterfowl. Floods regularly. Possible Biodiversity Opportunity Site for development nearby e.g. Redhill Allotments.				
Archaeology comments	Previously identified as an area with archaeological potential - shrunken village; BES and LWS				
Heritage comments	Scheduled Monument of Belgrave Bridge (also Grade II Listed) c. 200 metres to south, visual disjunction due to vegetation				
In Conservation Area	No				
In Air Quality Management Area	Adjacent				
Distance to water body	Eastern tip almost adjacent River Soar				
Flood zone	About half of site is flood zone 2. Includes compensation flood area created as part of EA flood schemes				
Previously developed land	Greenfield				
Distance to train station (m)	>2km				
Distance to primary school (m)	671				
Index of multiple deprivation	3				
Mitigation	Green Wedge Local Wildlife Site and associated ecology: ponds, meadows etc. Archaeological potential River Soar and ponds re. runoff, contamination				

657 Ryder Road open space					
Gross area	0.81	Net area	0.66	Net housing	20
					
Distance to GP (m)	437				
Parks quantity/quality	Sufficient greenspace in ward. No facilities on site. Mature former field hedge at the rear of the site.				
Sports	No comment				
Distance to Green Wedge (m)	197				
Distance to allotments (m)	738				
Distance to SSSI	>2km				
Distance to Local Wildlife Site (m)	0 – site is a LWS				
Biodiversity comments	LWS - forms part of ecological network and terrestrial habitat for Great Crested Newts				
Archaeology comments	No comment				
Heritage comments	No comment				
In Conservation Area	No				
In Air Quality Management Area	No				
Distance to water body	113 drain				
Flood zone	1				
Previously developed land	Greenfield				
Distance to train station (m)	>2km				
Distance to primary school (m)	449				
Index of multiple deprivation	2				
Mitigation	Local Wildlife Site, ecological network, Great Crested Newts				



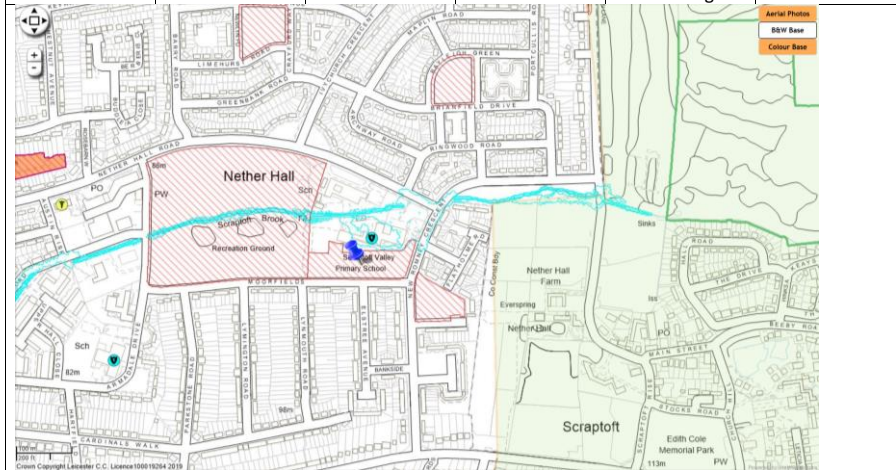
658 Ryder Road spinney					
Gross area	0.61	Net area	0.5	Net housing	15
Distance to GP (m)	553				
Parks quantity/quality	Site provides access to woodland habitat, however Western Park is located nearby. Mature woodland				
Sports	No comment				
Distance to Green Wedge (m)	388				
Distance to allotments (m)	514				
Distance to SSSI	>2km				
Distance to Local Wildlife Site (m)	0 – site is LWS				
Biodiversity comments	Overgrown hedge and mature trees in linear site - almost 100% tree cover. Provides terrestrial habitat for Great Crested Newts and forms part of ecological network. Not of great value arboriculturally.				
Archaeology comments	No comment				
Heritage comments	No comment				
In Conservation Area	No				
In Air Quality Management Area	No				
Distance to water body	0 – site includes drains				
Flood zone	1				
Previously developed land	Greenfield				
Distance to train station (m)	>2km				
Distance to primary school (m)	389				
Index of multiple deprivation	2				
Mitigation	Access to open space Local Wildlife Site, ecological network, Great Crested Newts Drains on site re. runoff, contamination				

660 Sandfield Close primary school playing fields					
Gross area	1.38	Net area	1.14	Net housing	34
					
Distance to GP (m)	690				
Parks quantity/quality	No comment				
Sports	School playing fields, any loss or encroachment of the playing fields would significantly impact the amount of sport and physical activity that pupils have access to.				
Distance to Green Wedge (m)	1411				
Distance to allotments (m)	796				
Distance to SSSI	1219				
Distance to Local Wildlife Site (m)	540				
Biodiversity comments	Sports fields with trees on edge. No designation but mature trees and hedgerow on east boundary. Forms part of ecological network.				
Archaeology comments	Very close to known prehistoric and Roman settlement activity				
Heritage comments	No comment				
In Conservation Area	No				
In Air Quality Management Area	No				
Distance to water body	811 Melton Brook				
Flood zone	1				
Previously developed land	Greenfield				
Distance to train station (m)	>2km				
Distance to primary school (m)	0 - adjacent				
Index of multiple deprivation	>3				
Mitigation	Playing fields Hedgerow, trees, ecological network				

661 Sandhurst Road allotments					
Gross area	2.72	Net area	1.7	Net housing	51
Distance to GP (m)	148				
Parks quantity/quality	Allotments are to be retained as there is a statutory requirement to provide Leicester's population with sufficient access to allotment space. There is a need to ensure that the standards of provision are maintained for the future needs of the population which will alter as a result from new housing areas.				
Sports	No comment				
Distance to Green Wedge (m)	1026				
Distance to allotments (m)	0 – site is allotments				
Distance to SSSI	>2km				
Distance to Local Wildlife Site (m)	502				
Biodiversity comments	Not designated but currently allotments of intrinsic value.				
Archaeology comments	Nearby artefacts may be the result of middening activity - spreading of rubbish on fields - too far though from city and hints at nearby settlement				
Heritage comments	Turn of the 20th century Victorian two-storey terraced development along Pool Street flanking the plot				
In Conservation Area	No				
In Air Quality Management Area	No				
Distance to water body	152 ditch				
Flood zone	1				
Previously developed land	Greenfield				
Distance to train station (m)	>2km				
Distance to primary school (m)	253				
Index of multiple deprivation	2				
Mitigation	Allotment Biodiversity Archaeological assets				

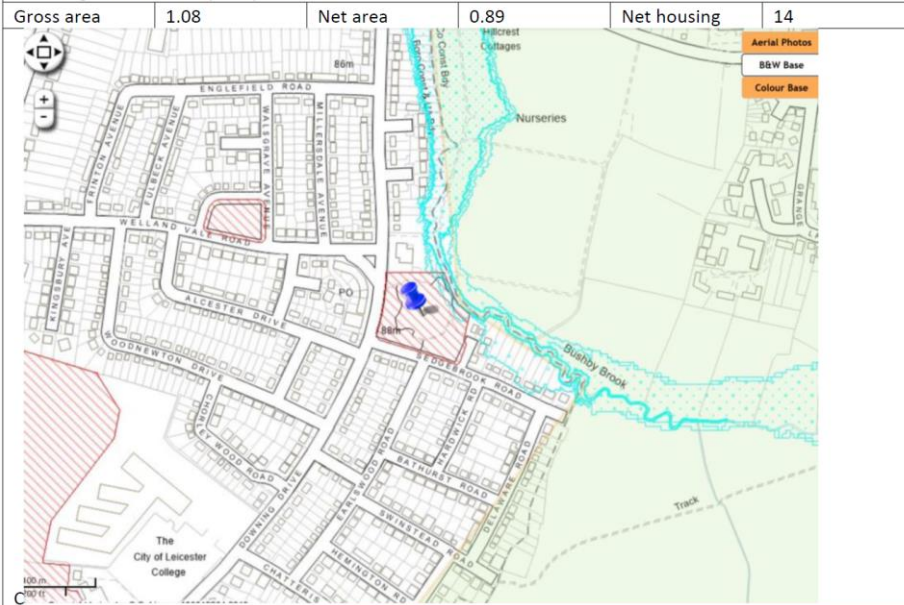
662 Scraftoft Valley primary school playing fields

Gross area	0.98	Net area	0.81	Net housing	24
------------	------	----------	------	-------------	----



Distance to GP (m)	532
Parks quantity/quality	No comment
Sports	Education to provide comments
Distance to Green Wedge (m)	1660
Distance to allotments (m)	567
Distance to SSSI	>2km
Distance to Local Wildlife Site (m)	817
Biodiversity comments	Sports fields . No designation
Archaeology comments	No comment
Heritage comments	No comment
In Conservation Area	No
In Air Quality Management Area	No
Distance to water body	91 Scraftoft Brook
Flood zone	1
Previously developed land	Greenfield
Distance to train station (m)	>2km
Distance to primary school (m)	0 - adjacent
Index of multiple deprivation	2
Mitigation	Site on edge of city Possible playing field/sports issues

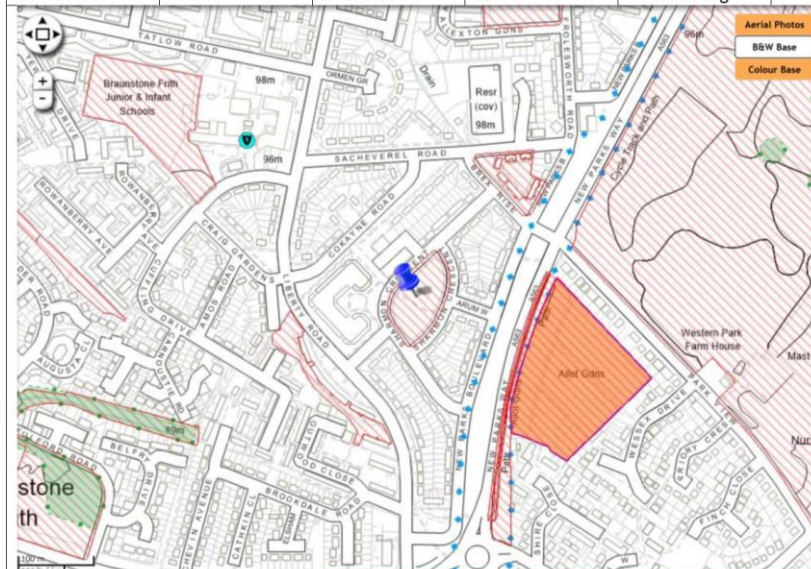
663 Sedgebrook Road open space



Distance to GP (m)	680
Parks quantity/quality	Play area
Sports	
Distance to Green Wedge (m)	1460. Site is on edge of built-up area
Distance to allotments (m)	1105
Distance to SSSI	>2km
Distance to Local Wildlife Site (m)	706
Biodiversity comments	No designation.
Archaeology comments	Possible mitigation required
Heritage comments	Adjacent comprehensive post-war development on site, with locally prominent The Dove to immediate north (not listed / designated)
In Conservation Area	no
In Air Quality Management Area	no
Distance to water body	0 - adj Bushby Brook. Bushby Brook links with Local Wildlife Site to the N
Flood zone	about 10% of site zone 2, small amount of zone 3b at NE edge
Previously developed land	Greenfield
Distance to train station (m)	>2km
Distance to primary school (m)	836
Index of multiple deprivation	>3
Mitigation	Play area Possible archaeological assets Bushby Brook re. runoff, impacts on Local Wildlife Site Flooding


665 Sharmon Crescent open space

Gross area	0.66	Net area	0.5	Net housing	10
------------	------	----------	-----	-------------	----



Distance to GP (m)	663
Parks quantity/quality	Site provides access to play facilities. Play area at the centre of the site. Western park located nearby.
Sports	
Distance to Green Wedge (m)	602
Distance to allotments (m)	163
Distance to SSSI	>2km
Distance to Local Wildlife Site (m)	342
Biodiversity comments	No designation. Trees.
Archaeology comments	No comment
Heritage comments	no comment
In Conservation Area	no
In Air Quality Management Area	no
Distance to water body	970 ditch
Flood zone	1
Previously developed land	Greenfield
Distance to train station (m)	>2km
Distance to primary school (m)	295
Index of multiple deprivation	3
Mitigation	Play facilities

Commented [A1]: Site 669 moved to App B

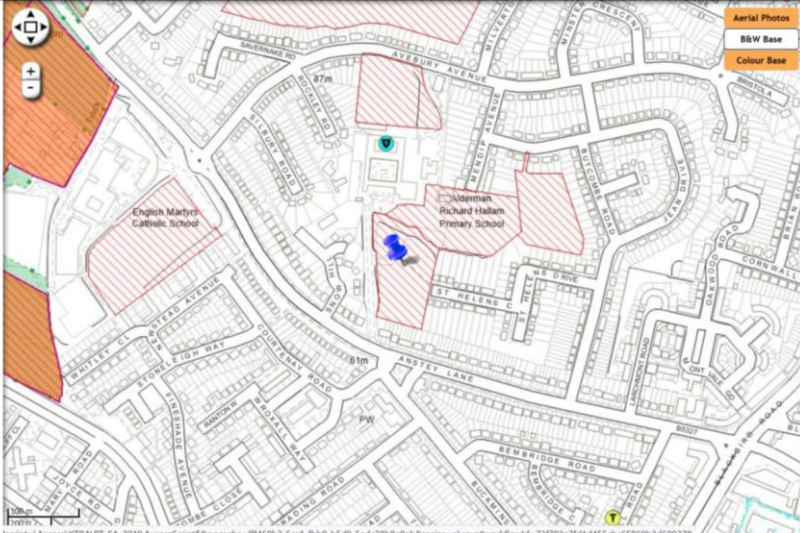
671 Spinney off Kingsway Road					
Gross area	0.54	Net area	0.45	Net housing	14
					
Distance to GP (m)	791				
Parks quantity/quality	Ward is deficient in green space. Large mature woodland. Access is very difficult				
Sports	No comment				
Distance to Green Wedge (m)	922				
Distance to allotments (m)	836				
Distance to SSSI	>2km				
Distance to Local Wildlife Site (m)	210				
Biodiversity comments	BES - Broadleaf woodland - priority habitat next to Evington Brook. Contains mature trees pLWS and badger setts. Mature mixed species TPO woodland. No survey has yet been carried out so no idea as to what is there or if worthy of retention.				
Archaeology comments	No comment				
Heritage comments	c. 130 metres north-east from the Stoneygate Conservation Area, post-war development of some architectural merit, of up to 2-storeys along Highway Road and top of Kingsway Road				
In Conservation Area	No				
In Air Quality Management Area	No				
Distance to water body	0 – adjacent Evington Brook				
Flood zone	15-20% zone 3a, another 10-15% zone 2				
Previously developed land	Greenfield				
Distance to train station (m)	>2km				
Distance to primary school (m)	874				
Index of multiple deprivation	>3				
Mitigation	Green space provision Broadleaf woodland Evington Brook re. contamination, runoff Flooding Not particularly accessible re. services				

673 St. Augustines		Gross area	4.98	Net area	3.11	Net housing	0 - education
Distance to GP (m)	433						
Parks quantity/quality	Sports						
Distance to Green Wedge (m)	1685						
Distance to allotments (m)	741						
Distance to SSSI	>2km						
Distance to Local Wildlife Site (m)	0 - site includes Local Wildlife Site						
Biodiversity comments	Not designated - brownfield site but between LWS - Soar and BES Rally Park - strong position in ecological network						
Archaeology comments	Site of Augustinian monastic site; site of Friars of the Sack monastery; alluvial and waterlogged deposits.						
Heritage comments	Grade II Listed Bow Bridge and part of Grade II Listed West Bridge within the designated site, immediately adjacent Castle CA, c. 100 metres from the Scheduled Monument of Leicester Castle and the Magazine Gateway, in immediate proximity to the Grade II Listed Group of former Donisthorpe & Co. factory structures and a range of Locally Listed assets						
In Conservation Area	no						
In Air Quality Management Area	partly						
Distance to water body	0 - adj Rover Soar						
Flood zone	5-10% of site is zone 3a, most of the rest is zone 2						
Previously developed land	Brownfield						
Distance to train station (m)	1483						
Distance to primary school (m)	466						
Index of multiple deprivation	1						
Mitigation	Local Wildlife Site, strong position in ecological network Archaeological and heritage assets Air Quality Management Area Flooding River Soar re. runoff						



675 St Helens Close open space

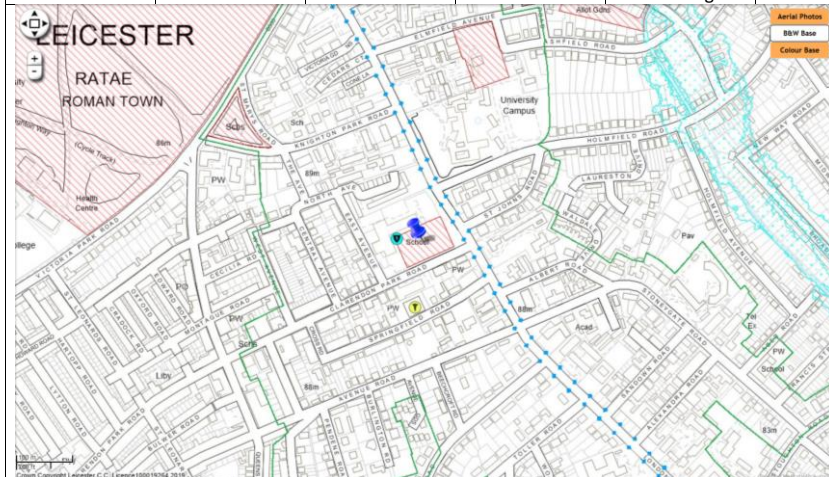
Gross area	1.07	Net area	0.88	Net housing	14
------------	------	----------	------	-------------	----



Distance to GP (m)	445
Parks quantity/quality	Other greenspace accessible nearby. Large play area to the north west corner of the site. Steep slopes in parts
Sports	
Distance to Green Wedge (m)	484
Distance to allotments (m)	649
Distance to SSSI	>2km
Distance to Local Wildlife Site (m)	483
Biodiversity comments	Not designated but mature hedgerow/shelterbelt to west boundary and South boundary. Part of ecological network to adjoining sites.
Archaeology comments	Sand and gravel pit; no further action needed
Heritage comments	Adjacent post-war Alderman Richard Hallam Primary School, of some local architectural and historic merit
In Conservation Area	no
In Air Quality Management Area	no
Distance to water body	958 River Soar
Flood zone	1
Previously developed land	Greenfield
Distance to train station (m)	>2km
Distance to primary school (m)	154 - school adjacent
Index of multiple deprivation	>3
Mitigation	Play area Hedgerow/shelterbelt, ecological network


676 St John the Baptist C of E primary school playing fields


Gross area	0.53	Net area	0.44	Net housing	13
------------	------	----------	------	-------------	----



Distance to GP (m)	102
Parks quantity/quality	No comment
Sports	No comment
Distance to Green Wedge (m)	>2km
Distance to allotments (m)	481
Distance to SSSI	>2km
Distance to Local Wildlife Site (m)	1032
Biodiversity comments	Not designated, but mature trees along boundary
Archaeology comments	No comment
Heritage comments	Within Stoneygate Conservation Area, adjacent the Grade II* Listed Church of St John the Baptist
In Conservation Area	Yes
In Air Quality Management Area	Almost adjacent
Distance to water body	546 Evington Brook
Flood zone	1
Previously developed land	Greenfield
Distance to train station (m)	1650
Distance to primary school (m)	0 - adjacent
Index of multiple deprivation	>3
Mitigation	Conservation Area

677 St Margarets Pastures					
Gross area	3.0	Net area		Net housing	90
Distance to GP (m)	764				
Parks quantity/quality	No comment				
Sports	Loss of sports facilities - site has recently been transferred to Leicester Hockey Club to re-establish the club within the City and be a catalyst for further development of Hockey within the city. Small football pitches support the future sustainability of the site and football (both casual and recreational) within the City.				
Distance to Green Wedge (m)	1557				
Distance to allotments (m)	709				
Distance to SSSI	>2km				
Distance to Local Wildlife Site (m)	0 - Adjacent				
Biodiversity comments	BES - Playing pitches - artificial and without ecological value, but mature shelter belt of trees to east (Cave Walk) and Park plus and River Soar LWS to north . Badgers very active in area. Forms part of strong ecological network				
Archaeology comments	Located to S of scheduled monument				
Heritage comments	Adjacent the Grade II* Historic Park and Garden of the Abbey Park, c. 60 metres from the Scheduled Monument of Leicester Abbey and Cavendish House and the Grade I Listed Abbot Penny's Wall, adjacent the Grade II Listed South Lodge to Abbey Park and Locally Listed assets along Friday Street				
In Conservation Area	No				
In Air Quality Management Area	Yes				
Distance to water body	0 – Adj River Soar				
Flood zone	About 90% is zone 3a, rest is zone 2				
Previously developed land	Greenfield				
Distance to train station (m)	1593				
Distance to primary school (m)	314				
Index of multiple deprivation	3				
Mitigation	Sports facilities Ecological network with adjacent Local Wildlife Sites Heritage and archaeological assets Air Quality Management Area River Soar re. runoff, contamination				

678 St Oswalds Road playing fields					
Gross area	3.04	Net area	2	Net housing	60
					
Distance to GP (m)	193				
Parks quantity/quality	No comment				
Sports	While the football pitch has been disused for a number of years, we are undertaking the development of a new cricket ground to be based from that site.				
Distance to Green Wedge (m)	690				
Distance to allotments (m)	597				
Distance to SSSI	>2km				
Distance to Local Wildlife Site (m)	819				
Biodiversity comments	Trees/hedge at edges				
Archaeology comments	Located near to possible Bronze Age barrow; BES				
Heritage comments	Adjacent Locally Listed 1950s Council Housing Blocks and St Aidan's Church				
In Conservation Area	No				
In Air Quality Management Area	Adjacent				
Distance to water body	834 ditch				
Flood zone	1				
Previously developed land	Greenfield				
Distance to train station (m)	>2km				
Distance to primary school (m)	379				
Index of multiple deprivation	1				
Mitigation	Sports provision Vegetation at edge of site Possible archaeological assets				

679 St. Marks open space					
Gross area	2.24	Net area		Net housing	68
					
Distance to GP (m)	314				
Parks quantity/quality	Provides greenspace within a densely populated residential area. Many facilities on site.				
Sports	Site contains a ball court but there is a further ball court located on Cossington Street that could offset the loss of this court. However there is a small school playing field located next to Catherine Junior School: any loss or encroachment of the playing fields would significantly impact the amount of sport and physical activity that pupils have access to.				
Distance to Green Wedge (m)	1603				
Distance to allotments (m)	887				
Distance to SSSI	>2km				
Distance to Local Wildlife Site (m)	747				
Biodiversity comments	Not designated, but mature trees on site				
Archaeology comments	Area previously terraced housing				
Heritage comments	Victorian terraced housing to Dorset Street of some heritage merit, not listed / designated				
In Conservation Area	No				
In Air Quality Management Area	Yes				
Distance to water body	401 Grand Union Canal				
Flood zone	About 30% of site is 3a, almost all of the rest is 2				
Previously developed land	greenfield				
Distance to train station (m)	1613				
Distance to primary school (m)	145 Adjacent				
Index of multiple deprivation	1				
Mitigation	Green space Trees on site Ball court, Catherine Junior School playing fields Air Quality Management Area Flooding				


680 Stokes Drive allotments					
Gross area	1.84	Net area	1.52	Net housing	46
Distance to GP (m)	907				
Parks quantity/quality	Allotments are to be retained as there is a statutory requirement to provide Leicester's population with sufficient access to allotment space. There is a need to ensure that the standards of provision are maintained for the future needs of the population which will alter as a result from new housing areas.				
Sports	No comment				
Distance to Green Wedge (m)	223				
Distance to allotments (m)	0 – site is allotments				
Distance to SSSI	>2km				
Distance to Local Wildlife Site (m)	0 - adjacent				
Biodiversity comments	BES and LWS on southern tip and adjacent. Allotments well used and of intrinsic ecological value. Site forms part of extensive ecological network. Lots of badger constraints				
Archaeology comments	No comment				
Heritage comments	No comment				
In Conservation Area	No				
In Air Quality Management Area	No				
Distance to water body	224 ditch				
Flood zone	1				
Previously developed land	Greenfield				
Distance to train station (m)	>2km				
Distance to primary school (m)	0 - adjacent				
Index of multiple deprivation	2				
Mitigation	Allotments Adjacent Local Wildlife Site Ecological value				

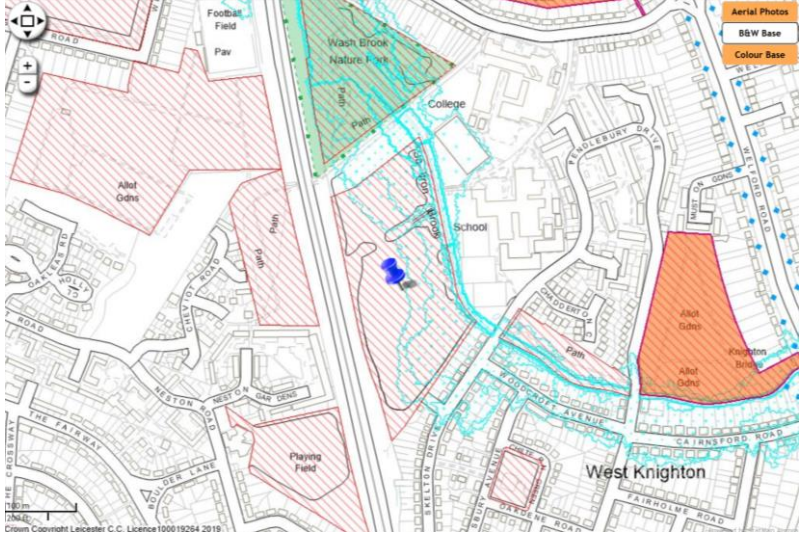
681 Stokes Wood Park			
Gross area	19.13	Net area	
Net housing	574		
Distance to GP (m)	455		
Parks quantity/quality	Large areas of natural greenspace. No other facilities on site.		
Sports	No comment		
Distance to Green Wedge (m)	485		
Distance to allotments (m)	0 – two allotments on the site		
Distance to SSSI	>2km		
Distance to Local Wildlife Site (m)	0 – most of the site is LWS		
Biodiversity comments	Lots of badgers, trees, species-rich meadow, mature hedgerows and pond. Site forms part of extensive ecological network. Lots of badger constraints.		
Archaeology comments	Located near finds of Iron Age quern stones and medieval windmill		
Heritage comments	Locally Listed Asset Gatehouse to Former Borough Fever & Smallpox Hospital within the designated site; adjacent the Locally Listed New Parks House		
In Conservation Area	No		
In Air Quality Management Area	No		
Distance to water body	0 – ditch on Garland Crescent side of site		
Flood zone	1, less than 5% is flood zone 2		
Previously developed land	Greenfield		
Distance to train station (m)	>2km		
Distance to primary school (m)	5 – adjacent two schools		
Index of multiple deprivation	3		
Mitigation	Local Wildlife Site Allotments Ecology: badgers, trees, meadow, pond etc. Archaeological and heritage assets Pond/ditch re. runoff, contamination		

682 Stokes Wood primary school playing fields

Gross area	1.34	Net area	1.1	Net housing	34
Distance to GP (m)	954				
Parks quantity/quality	No comment				
Sports	School playing fields, any loss or encroachment of the playing fields would significantly impact the amount of sport and physical activity that pupils have access to.				
Distance to Green Wedge (m)	199				
Distance to allotments (m)	0 - adjacent				
Distance to SSSI	>2km				
Distance to Local Wildlife Site (m)	0 - adjacent				
Biodiversity comments	BES and LWS on southern tip - mature trees in grounds and site forms part of extensive ecological network.				
Archaeology comments	Located near finds of Iron Age quern stones and medieval windmill				
Heritage comments	No comment				
In Conservation Area	No				
In Air Quality Management Area	No				
Distance to water body	379 ditch				
Flood zone	1				
Previously developed land	Greenfield				
Distance to train station (m)	>2km				
Distance to primary school (m)	0 - adjacent				
Index of multiple deprivation	2				
Mitigation	School playing fields Adjacent Local Wildlife Site Mature trees Archaeological heritage				




683 Sutton Road allotments, Knighton Fields Road East allotments					
Gross area	1.02	Net area		Net housing	
					
Distance to GP (m)	649				
Parks quantity/quality	Allotments are to be retained as there is a statutory requirement to provide Leicester's population with sufficient access to allotment space. There is a need to ensure that the standards of provision are maintained for the future needs of the population which will alter as a result from new housing areas.				
Sports	No comment				
Distance to Green Wedge (m)	1202				
Distance to allotments (m)	0 – site is allotments				
Distance to SSSI	>2km				
Distance to Local Wildlife Site (m)	183				
Biodiversity comments	Not designated but currently allotments of intrinsic value and difficult to mitigate against loss of biodiversity.				
Archaeology comments	No comment				
Heritage comments	Adjacent the pair of Grade II Listed properties at Nos. 19 -21 Great Arler Road and the Locally Listed Nos. 517-519 Welford Road; part of the original 1920s Houses for Heroes development on site, designated by nationally renowned Artur Wakerley				
In Conservation Area	No				
In Air Quality Management Area	Adjacent on E tip				
Distance to water body	282 Saffron Brook				
Flood zone	1				
Previously developed land	Greenfield				
Distance to train station (m)	>2km				
Distance to primary school (m)	911				
Index of multiple deprivation	2				
Mitigation	Allotments Biodiversity interest Air Quality Management Area Heritage assets Nearby Local Wildlife Site				

685 Lancaster School playing fields	
Gross area	4.55
Net area	2.84
Net housing	25
	
Distance to GP (m)	866
Parks quantity/quality	
Sports	School playing fields, any loss or encroachment of the playing fields would significantly impact the amount of sport and physical activity that pupils have access to.
Distance to Green Wedge (m)	1046
Distance to allotments (m)	345
Distance to SSSI	>2km
Distance to Local Wildlife Site (m)	198
Biodiversity comments	BES - Saffron Brook on east boundary and mainline railway on west. Mature hedgerow/shelterbelt through central part of site. Site forms part of extensive ecological network. Trees.
Archaeology comments	No comment
Heritage comments	no comment
In Conservation Area	no
In Air Quality Management Area	no
Distance to water body	0 - adj Saffron Brook
Flood zone	about 5% of site adj Saffron Brook zone 3b, 40% of site zone 3a, another 20% zone 2
Previously developed land	Greenfield
Distance to train station (m)	>2km
Distance to primary school (m)	772
Index of multiple deprivation	3
Mitigation	Playing fields / sports facilities Biodiversity: hedgerow/shelterbelt, trees, ecological network Saffron Brook re. runoff Flooding

Commented [A2]: Site 687 moved to App B

688 Thurmaston Lane, land south of Manor Farm

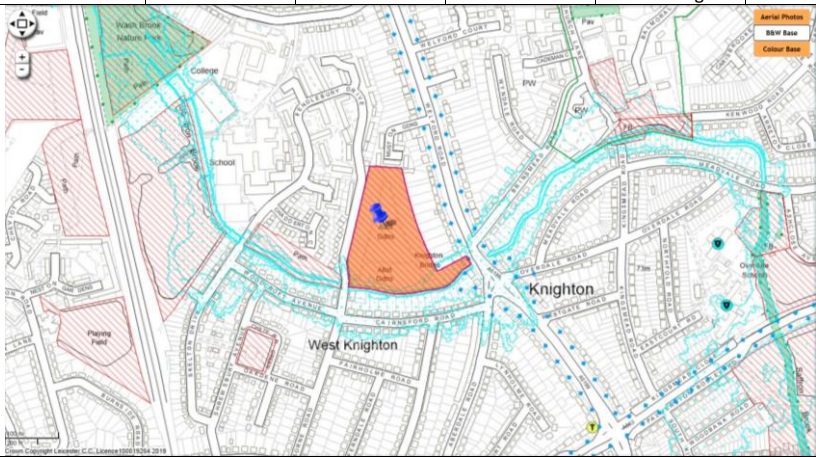
Gross area	7.28	Net area	4.55	Net housing	38
Distance to GP (m)	765				
Parks quantity/quality	No comment				
Sports	No comment				
Distance to Green Wedge (m)	138 across Thurmaston Lane				
Distance to allotments (m)	823				
Distance to SSSI	1018				
Distance to Local Wildlife Site (m)	864				
Biodiversity comments	Not designated but forms part of ecological corridor and adjacent to Green Wedge of Humberstone Park				
Archaeology comments	Medieval manorial site and fish ponds; rare medieval rabbit warren; ridge and furrow; nationally and locally listed assets				
Heritage comments	Old Humberstone Conservation Area, Locally Listed Humberstone Fishponds on site, adjacent Grade II Listed Humberstone Manor, barn to Humberstone Manor, Francis Dixon Lodge and associated stables				
In Conservation Area	Yes				
In Air Quality Management Area	No				
Distance to water body	0 – fish ponds on site				
Flood zone	1				
Previously developed land	Greenfield				
Distance to train station (m)	>2km				
Distance to primary school (m)	313				
Index of multiple deprivation	2				
Mitigation	Ecological corridor Archaeological and heritage assets Conservation Area Fish ponds re. runoff, contamination				

690 Trevino Drive open space					
Gross area	1.61	Net area	1.33	Net housing	40
					
Distance to GP (m)	750				
Parks quantity/quality	Ward deficient in greenspace. Play area on site. Provides access to local residents. Significant level of s106 funding recently invested into the site with the provision of a new play area, outdoor gym, and kickabout area				
Sports	No loss of pitches				
Distance to Green Wedge (m)	1336				
Distance to allotments (m)	883				
Distance to SSSI	1172				
Distance to Local Wildlife Site (m)	551				
Biodiversity comments	Not designated, but mature trees throughout the site				
Archaeology comments	Close to Roman and prehistoric activity, possible Bronze Age cemetery to the south, ridge and furrow				
Heritage comments	No comments				
In Conservation Area	No				
In Air Quality Management Area	No				
Distance to water body	740 Melton Brook				
Flood zone	1, except for <5% in flood zone 2, SE part of site				
Previously developed land	Greenfield				
Distance to train station (m)	>2km				
Distance to primary school (m)	121 adjacent				
Index of multiple deprivation	<3				
Mitigation	Greenspace, play area Mature trees Possible archaeological assets				

692 Uppingham Road allotments					
Gross area	2.88	Net area	1.8	Net housing	54
Distance to GP (m)	294				
Parks quantity/quality	Allotments are to be retained as there is a statutory requirement to provide Leicester's population with sufficient access to allotment space. There is a need to ensure that the standards of provision are maintained for the future needs of the population which will alter as a result from new housing areas.				
Sports	No comment				
Distance to Green Wedge (m)	797				
Distance to allotments (m)	0 – site is allotments				
Distance to SSSI	1622				
Distance to Local Wildlife Site (m)	560				
Biodiversity comments	Not designated but currently allotments of intrinsic value and difficult to mitigate against loss of biodiversity				
Archaeology comments					
Heritage comments	Adjacent Locally Listed Nos. 243-248 Uppingham Road				
In Conservation Area	No				
In Air Quality Management Area	Adjacent				
Distance to water body	397 Bushby Brook				
Flood zone	About half of site is zone 2				
Previously developed land	Greenfield				
Distance to train station (m)	>2km				
Distance to primary school (m)	443				
Index of multiple deprivation	1				
Mitigation	Allotments Biodiversity Air Quality Management Area Flooding				

695 Wakerley Road allotments					
Gross area	4.51	Net area	2.82	Net housing	85
Distance to GP (m)	458				
Parks quantity/quality	Allotments are to be retained as there is a statutory requirement to provide Leicester's population with sufficient access to allotment space. There is a need to ensure that the standards of provision are maintained for the future needs of the population which will alter as a result from new housing areas.				
Sports	No comment				
Distance to Green Wedge (m)	1001				
Distance to allotments (m)	0 – site is allotments				
Distance to SSSI	>2km				
Distance to Local Wildlife Site (m)	282				
Biodiversity comments	Not designated but currently allotments of intrinsic value and difficult to mitigate against loss of biodiversity.				
Archaeology comments					
Heritage comments	Pre-war and inter-war comprehensive suburban development to Linden Drive, of architectural and historic merit				
In Conservation Area	No				
In Air Quality Management Area	No				
Distance to water body	539 flood relief basin				
Flood zone	1				
Previously developed land	Greenfield				
Distance to train station (m)	>2km				
Distance to primary school (m)	0 - adjacent				
Index of multiple deprivation	3				
Mitigation	Allotments Biodiversity Possible archaeological assets				

696 Walshe Road allotments					
Gross area	4.51	Net area	2.82	Net housing	85
Distance to GP (m)	1040				
Parks quantity/quality	Allotments are to be retained as there is a statutory requirement to provide Leicester's population with sufficient access to allotment space. There is a need to ensure that the standards of provision are maintained for the future needs of the population which will alter as a result from new housing areas.				
Sports	No comment				
Distance to Green Wedge (m)	1754				
Distance to allotments (m)	0 – site is allotments				
Distance to SSSI	>2km				
Distance to Local Wildlife Site (m)	706				
Biodiversity comments	Not designated but currently allotments of intrinsic value and difficult to mitigate against loss of biodiversity.				
Archaeology comments	No comment				
Heritage comments	No comment				
In Conservation Area	No				
In Air Quality Management Area	No				
Distance to water body	809 Bushby Brook				
Flood zone	1				
Previously developed land	Greenfield				
Distance to train station (m)	>2km				
Distance to primary school (m)	645				
Index of multiple deprivation	3				
Mitigation	Allotments Biodiversity				

699 Welford Road allotments					
Gross area	294	Net area	1.84	Net housing	56
					
Distance to GP (m)	524				
Parks quantity/quality	Allotments are to be retained as there is a statutory requirement to provide Leicester's population with sufficient access to allotment space. There is a need to ensure that the standards of provision are maintained for the future needs of the population which will alter as a result from new housing areas.				
Sports	No comment				
Distance to Green Wedge (m)	739				
Distance to allotments (m)	0 – site is allotments				
Distance to SSSI	>2km				
Distance to Local Wildlife Site (m)	462				
Biodiversity comments	BES currently allotments of intrinsic value. Southern boundary is Saffron Brook				
Archaeology comments					
Heritage comments	The lock property to river within the designated plot is of some architectural merit				
In Conservation Area	No				
In Air Quality Management Area	Adjacent at entrance				
Distance to water body	0 – adjacent Saffron Brook				
Flood zone	Eastern 10% is zone 3a, southern edge is zone 2				
Previously developed land	Greenfield				
Distance to train station (m)	>2km				
Distance to primary school (m)	599				
Index of multiple deprivation	3				
Mitigation	Allotments Biodiversity interest Saffron Brook re. runoff, contamination Archaeological and heritage assets Flooding				

Commented [A3]: Site 702 moved to App B



704 West Gate School playing fields					
Gross area	5.11	Net area	3.19	Net housing	96
Distance to GP (m)	747				
Parks quantity/quality	No comment				
Sports	School playing fields, any loss or encroachment of the playing fields would significantly impact the amount of sport and physical activity that pupils have access to.				
Distance to Green Wedge (m)	1759				
Distance to allotments (m)	867				
Distance to SSSI	>2km				
Distance to Local Wildlife Site (m)	359				
Biodiversity comments	No designation				
Archaeology comments	Possible Bronze Age barrow identified on site; ridge and furrow; BES				
Heritage comments	c. 130 metres from the Locally listed Western Asset (designated assets within)				
In Conservation Area	No				
In Air Quality Management Area	Adjacent				
Distance to water body	346 ditch				
Flood zone	1				
Previously developed land	Greenfield				
Distance to train station (m)	>2km				
Distance to primary school (m)	275				
Index of multiple deprivation	1				
Mitigation	School playing fields Archaeological assets Adjacent AQMA				

708 Wolsey House primary school playing fields			
Gross area	1.32	Net area	1.08
		Net housing	33
Distance to GP (m)	358		
Parks quantity/quality	No comments		
Sports	School playing fields, any loss or encroachment of the playing fields would significantly impact the amount of sport and physical activity that pupils have access to.		
Distance to Green Wedge (m)	521		
Distance to allotments (m)	0 - adjacent		
Distance to SSSI	>2km		
Distance to Local Wildlife Site (m)	0 - adjacent		
Biodiversity comments	Playing field with trees and pond on E edge. BES - adjacent to LWS Rally Bank former railway line. Broadleaf woodland to east boundary (priority habitat)		
Archaeology comments			
Heritage comments	Pre-war residential development along Hobson Road and Orton Road, some architectural and historic merit		
In Conservation Area	No		
In Air Quality Management Area	No		
Distance to water body	0 – pond on site		
Flood zone	1		
Previously developed land	Greenfield		
Distance to train station (m)	>2km		
Distance to primary school (m)	0 - adjacent		
Index of multiple deprivation	2		
Mitigation	School playing fields Trees Adjacent Local Wildlife Site Pond on site – runoff, contamination		

709 Woodstock Primary School playing fields

Gross area	2.02	Net area	1.7	Net housing	51
Distance to GP (m)	680				
Parks quantity/quality	No comment				
Sports	School playing fields, any loss or encroachment of the playing fields would significantly impact the amount of sport and physical activity that pupils have access to.				
Distance to Green Wedge (m)	560				
Distance to allotments (m)	452				
Distance to SSSI	>2km				
Distance to Local Wildlife Site (m)	378				
Biodiversity comments	No designation and mainly playing fields with short grass. Trees on northern boundary adjacent to Woodstock Rd				
Archaeology comments	No comment				
Heritage comments	Adjacent a c. 1955 school of some local architectural and historic significance				
In Conservation Area	No				
In Air Quality Management Area	No				
Distance to water body	525 ditch				
Flood zone	1				
Previously developed land	Greenfield				
Distance to train station (m)	>2km				
Distance to primary school (m)	Adjacent				
Index of multiple deprivation	1				
Mitigation	Playing fields				

710 Wycombe Road allotments	
Gross area	1.6
Net area	
Net housing	
Distance to GP (m)	450
Parks quantity/quality	Allotments are to be retained as there is a statutory requirement to provide Leicester's population with sufficient access to allotment space. There is a need to ensure that the standards of provision are maintained for the future needs of the population which will alter as a result from new housing areas.
Sports	No comment
Distance to Green Wedge (m)	567
Distance to allotments (m)	0 – site is allotments
Distance to SSSI	1360
Distance to Local Wildlife Site (m)	1355
Biodiversity comments	Not designated but currently allotments of intrinsic value.
Archaeology comments	Ridge and furrow, ditch and field system; possible 12th century farmstead nearby
Heritage comments	No comment
In Conservation Area	No
In Air Quality Management Area	No
Distance to water body	796 Bushby Brook
Flood zone	Most of the site is zone 2
Previously developed land	Greenfield
Distance to train station (m)	>2km
Distance to primary school (m)	221
Index of multiple deprivation	2
Mitigation	Allotments Biodiversity value Archaeological assets Flooding

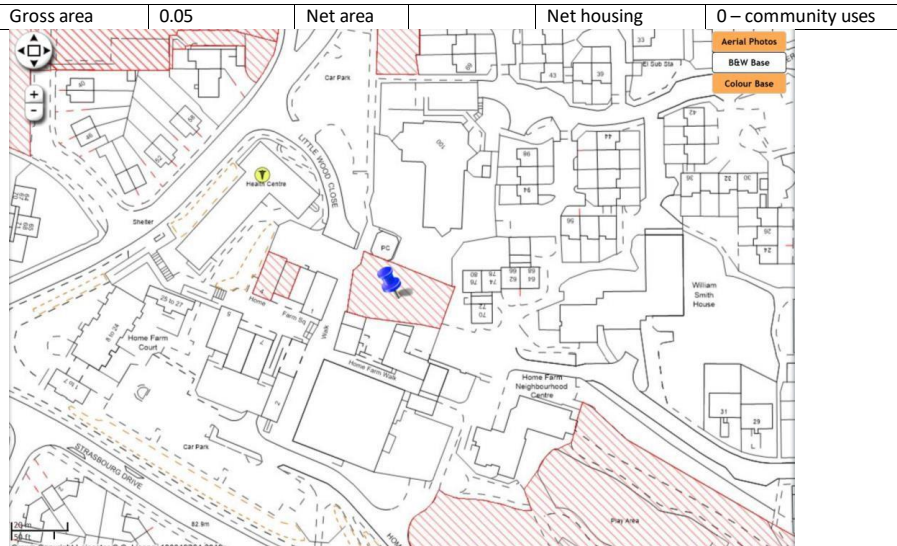
716 Highfields Industrial Estate, Maidstone Road

Gross area	0.52	Net area		Net housing	26
Distance to GP (m)	324				
Parks quantity/quality	No comment				
Sports	No comment				
Distance to Green Wedge (m)	>2km				
Distance to allotments (m)	1521				
Distance to SSSI	>2km				
Distance to Local Wildlife Site (m)	559				
Biodiversity comments	BES - adjacent to mainline railway with steep vegetated bank - mitigation on-site required to ensure biodiversity gain				
Archaeology comments	No archaeological concerns, but BES and TPOs				
Heritage comments	Adjacent the Locally Listed Tajdaar e Medina; existing structures on site of negligible heritage significance				
In Conservation Area	No				
In Air Quality Management Area	No				
Distance to water body	873 Evington Brook				
Flood zone	1				
Previously developed land	Yes				
Distance to train station (m)	490				
Distance to primary school (m)	281				
Index of multiple deprivation	1				
Mitigation	Very central, accessible site Listed building				

717 Hilltop Road, Hamilton Industrial Park	
Gross area	4.66
Net area	
Net housing	
0 - employment	
Distance to GP (m)	2039
Parks quantity/quality	
Sports	
Distance to Green Wedge (m)	0 - site is Green Wedge
Distance to allotments (m)	>2km
Distance to SSSI	1212
Distance to Local Wildlife Site (m)	387
Biodiversity comments	Green Wedge - adjacent to Melton Brook - mainly arable but likely to be needed for compensation for road scheme and/or Biodiversity Opportunity Site to compensate for loss nearby. Forms part of extensive ecological network
Archaeology comments	Area with known archaeology and settlement activity dating from Neolithic to Iron Age extending beyond LPA boundary.
Heritage comments	no comments
In Conservation Area	no
In Air Quality Management Area	no
Distance to water body	0 - site adjacent to Melton Brook
Flood zone	about 20% of site is zone 2
Previously developed land	Greenfield
Distance to train station (m)	>2km
Distance to primary school (m)	724
Index of multiple deprivation	3
Mitigation	Green Wedge Ecological network Archaeological assets Melton Brook re. runoff

Commented [A4]: Site 718 moved to App B

956 Site of 11 Old Barn Walk



Distance to GP (m)	64
Parks quantity/quality	Not in OSSR
Sports	No playing pitches visible on satellite imagery
Distance to Green Wedge (m)	1293
Distance to allotments (m)	1065
Distance to SSSI	>2km
Distance to Local Wildlife Site (m)	823
Biodiversity comments	No designation. Trees.
Archaeology comments	Listed buildings
Heritage comments	Abuts the Grade II Listed Home Farm on Strasbourg Drive
In Conservation Area	no
In Air Quality Management Area	no
Distance to water body	203 ditch
Flood zone	1
Previously developed land	Brownfield
Distance to train station (m)	>2km
Distance to primary school (m)	475
Index of multiple deprivation	1
Mitigation needed for	Archaeological and heritage assets

964 Lords Avenue	
Gross area	0.7
Net area	0.58
Net housing	18
Distance to GP (m)	491
Parks quantity/quality	Mature trees on site, woodland area
Sports	No comment
Distance to Green Wedge (m)	587
Distance to allotments (m)	1583
Distance to SSSI	>2km
Distance to Local Wildlife Site (m)	328
Biodiversity comments	Small spinney surrounded by roads and houses. A few oak on Bennion frontage worthy of retention; some ash (threatened by chalara) and hawthorn.
Archaeology comments	No comment
Heritage comments	No comment
In Conservation Area	No
In Air Quality Management Area	No
Distance to water body	160 ponds
Flood zone	1
Previously developed land	Greenfield
Distance to train station (m)	>2km
Distance to primary school (m)	453
Index of multiple deprivation	3
Mitigation	Trees



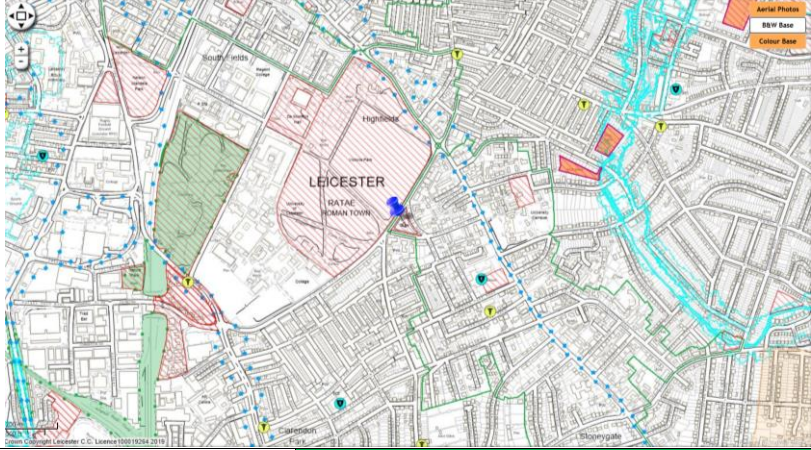
965 Bronte Close open space					
Gross area	0.66	Net area	0.56	Net housing	17
Distance to GP (m)	1051				
Parks quantity/quality	To be considered alongside Ranccliffe gardens. Lare play area on site and a number of mature trees				
Sports	No comment				
Distance to Green Wedge (m)	>2km				
Distance to allotments (m)	90				
Distance to SSSI	>2km				
Distance to Local Wildlife Site (m)	362				
Biodiversity comments	No designation. Trees				
Archaeology comments	Prehistoric/Roman settlement; hut circles, farmstead				
Heritage comments	No comment				
In Conservation Area	No				
In Air Quality Management Area	No				
Distance to water body	689 Little Gorse Brook				
Flood zone	1				
Previously developed land	Greenfield				
Distance to train station (m)	>2km				
Distance to primary school (m)	332				
Index of multiple deprivation	1				
Mitigation	Open space Trees Archaeological assets				

967 Beaumont Leys Lane					
Gross area	0.55	Net area	0.45	Net housing	14
Distance to GP (m)	337				
Parks quantity/quality	No comment				
Sports	Highway verge - no development potential				
Distance to Green Wedge (m)	1104				
Distance to allotments (m)	751				
Distance to SSSI	>2km				
Distance to Local Wildlife Site (m)	710				
Biodiversity comments	No designation but series of mature trees on road verge and forms part of ecological network that links to surrounding green space				
Archaeology comments	Northern end well-preserved medieval park pale and ditch; locally listed asset				
Heritage comments	No comment				
In Conservation Area	No				
In Air Quality Management Area	No				
Distance to water body	95 ditch				
Flood zone	1				
Previously developed land	Greenfield				
Distance to train station (m)	>2km				
Distance to primary school (m)	398				
Index of multiple deprivation	1				
Mitigation	Trees Archaeological assets				

970 Vicarage Lane community gardens

Gross area	0.5	Net area	0.41	Net housing	12
Distance to GP (m)	659				
Parks quantity/quality	Provides access to natural greenspace. Large pond on site. This site was created as part of the planning mitigation for the nearby development - therefore this site may be protected. Site has colonies of yellow ants.				
Sports	No comment				
Distance to Green Wedge (m)	636				
Distance to allotments (m)	238				
Distance to SSSI	1590				
Distance to Local Wildlife Site (m)	620				
Biodiversity comments	Small wooded area with pond behind houses. No designation but contains mature trees, pond, species-rich grass and formed mitigation site for backland development in the area.				
Archaeology comments	No comment				
Heritage comments	Some good representatives of inter-war housing along Vicarage Lane				
In Conservation Area	No				
In Air Quality Management Area	No				
Distance to water body	0 pond on site				
Flood zone	1				
Previously developed land					
Distance to train station (m)	>2km				
Distance to primary school (m)	411				
Index of multiple deprivation	3				
Mitigation	Access to green space Woodland Pond				

971 New Parks Way			
Gross area	0.5	Net area	
		Net housing	15
Distance to GP (m)	543		
Parks quantity/quality	No comment		
Sports	No comment		
Distance to Green Wedge (m)	838		
Distance to allotments (m)	0 – site is allotments		
Distance to SSSI	>2km		
Distance to Local Wildlife Site (m)	319		
Biodiversity comments	Not designated but currently allotments of intrinsic value and difficult to mitigate against loss of biodiversity.		
Archaeology comments			
Heritage comments	c. 50 metres from the locally listed Western Park		
In Conservation Area	No		
In Air Quality Management Area	Adjacent		
Distance to water body	754 drain		
Flood zone	1		
Previously developed land	Greenfield		
Distance to train station (m)	>2km		
Distance to primary school (m)	517		
Index of multiple deprivation	3		
Mitigation	Should parks comments be like those for other allotments (and red)? Allotments Biodiversity value Air Quality Management Area Nearby Local Wildlife Site and Western Park		

973 St. Marys Triangle, St. Marys Road					
Gross area	0.48	Net area	0.4	Net housing	12
					
Distance to GP (m)	455				
Parks quantity/quality	Victoria Park is adjacent to the site. Well used site, but no facilities present				
Sports	No comment				
Distance to Green Wedge (m)	>2km				
Distance to allotments (m)	611				
Distance to SSSI	>2km				
Distance to Local Wildlife Site (m)	632				
Biodiversity comments	Not designated but contains mature trees and grassland. Forms part of ecological network linked to Victoria Park and University grounds				
Archaeology comments	No comment				
Heritage comments	Within the Stoneygate CA, adjacent the Grade II Registered Historic Park and Garden of Victoria Park, c. 80 metres from the Grade II Listed White House				
In Conservation Area	Yes				
In Air Quality Management Area	No				
Distance to water body	263 pond				
Flood zone	1				
Previously developed land	Greenfield				
Distance to train station (m)	1304				
Distance to primary school (m)	349				
Index of multiple deprivation	3				
Mitigation	Well-connected site Mature trees, grassland, ecological network Conservation Area Heritage assets				

974 Portishead Road					
Gross area	0.48	Net area		Net housing	12
Distance to GP (m)	872				
Parks quantity/quality	Limited greenspace within the ward. No facilities on site, mainly used as a cut through for access. See also site 605				
Sports	No comment				
Distance to Green Wedge (m)	812				
Distance to allotments (m)	401				
Distance to SSSI	1505				
Distance to Local Wildlife Site (m)	1367				
Biodiversity comments	BES - forms linear ecological corridor that links to mainline railway and separates out two densely urban areas to north and south.				
Archaeology comments	No archaeological concerns				
Heritage comments	no comment				
In Conservation Area	no				
In Air Quality Management Area	no				
Distance to water body	590 Willow Brook				
Flood zone	1				
Previously developed land	Greenfield				
Distance to train station (m)	>2km				
Distance to primary school (m)	355				
Index of multiple deprivation	1				
Mitigation	Green space Ecological corridor				

976 Chiltern Green Open Space					
Gross area	0.44	Net area	0.36	Net housing	11
Distance to GP (m)	631				
Parks quantity/quality	Provides play facilities and access to open space for local residents				
Sports	No pitches laid out, site likely used for informal football. Likely to play an important role for young children's physical activity				
Distance to Green Wedge (m)	796				
Distance to allotments (m)	211				
Distance to SSSI	>2km				
Distance to Local Wildlife Site (m)	489				
Biodiversity comments	Not designated but 50% tree cover.				
Archaeology comments	No comment				
Heritage comments	No comment				
In Conservation Area	No				
In Air Quality Management Area	No				
Distance to water body	157 Saffron Brook				
Flood zone	1				
Previously developed land	Greenfield				
Distance to train station (m)	>2km				
Distance to primary school (m)	866				
Index of multiple deprivation	3				
Mitigation	Play facilities Access to open space Trees				

977 Ledbury Green					
Gross area	0.43	Net area	0.35	Net housing	11
Distance to GP (m)	790				
Parks quantity/quality	Goal posts on site				
Sports	No comment				
Distance to Green Wedge (m)	711				
Distance to allotments (m)	1095				
Distance to SSSI	>2km				
Distance to Local Wildlife Site (m)	1056				
Biodiversity comments	Trees. No designations				
Archaeology comments	No comment				
Heritage comments	No comment				
In Conservation Area	No				
In Air Quality Management Area	No				
Distance to water body	274 drain				
Flood zone	1				
Previously developed land	Greenfield				
Distance to train station (m)	>2km				
Distance to primary school (m)	286				
Index of multiple deprivation	1				
Mitigation					



978 Stonesby Avenue open space					
Gross area	0.43	Net area	0.35	Net housing	11
Distance to GP (m)	195				
Parks quantity/quality	No comments				
Sports	No comments				
Distance to Green Wedge (m)	1673				
Distance to allotments (m)	1107				
Distance to SSSI	>2km				
Distance to Local Wildlife Site (m)	811				
Biodiversity comments	No designations. Trees				
Archaeology comments	No comments				
Heritage comments	No comments				
In Conservation Area	No				
In Air Quality Management Area	No				
Distance to water body	1215 Saffron Brook				
Flood zone	1				
Previously developed land	Greenfield				
Distance to train station (m)	>2km				
Distance to primary school (m)	228				
Index of multiple deprivation	2				
Mitigation					

980 Strasbourg Drive					
Gross area	042	Net area	0.33	Net housing	11
Distance to GP (m)	195				
Parks quantity/quality	Steep bank				
Sports	No comment				
Distance to Green Wedge (m)	950				
Distance to allotments (m)	918				
Distance to SSSI	>2km				
Distance to Local Wildlife Site (m)	738				
Biodiversity comments	Trees				
Archaeology comments	No archaeological concerns but BES				
Heritage comments	c. 60 metres from the Grade II listed Beaumont Leys House				
In Conservation Area	No				
In Air Quality Management Area	No				
Distance to water body	210 drain				
Flood zone	1				
Previously developed land	Greenfied				
Distance to train station (m)	>2km				
Distance to primary school (m)	408				
Index of multiple deprivation	1				
Mitigation	Steep bank Trees				

981 Westcotes Garden					
Gross area	0.4	Net area	0.33	Net housing	10
Distance to GP (m)	257				
Parks quantity/quality	Limited provision of greenspace throughout the ward. High quality site with a number of facilities.				
Sports	No comment				
Distance to Green Wedge (m)	1451				
Distance to allotments (m)	399				
Distance to SSSI	>2km				
Distance to Local Wildlife Site (m)	607				
Biodiversity comments	No designations. Trees				
Archaeology comments	Locally listed asset and BES				
Heritage comments	Locally Listed Westcotes Gardens, c. 40 metres from the Ashleigh Road CA				
In Conservation Area	No				
In Air Quality Management Area	No				
Distance to water body	318 brook/ditch				
Flood zone	1				
Previously developed land	Greenfield				
Distance to train station (m)	>2km				
Distance to primary school (m)	456				
Index of multiple deprivation	3				
Mitigation	Green space Play facilities Locally listed asset				

982 Angela Drive					
Gross area	0.4	Net area	0.4	Net housing	12
Distance to GP (m)	607				
Parks quantity/quality	Heavily covered by mature oak trees				
Sports	No comment				
Distance to Green Wedge (m)	917				
Distance to allotments (m)	697				
Distance to SSSI	>2km				
Distance to Local Wildlife Site (m)	LWS on the site				
Biodiversity comments	LWS - habitat is of significant value for biodiversity providing connectivity for wildlife and bat roost potential. Mature oaks along length worthy of retention.				
Archaeology comments	No archaeological concerns but LWS				
Heritage comments	Adjacent the locally listed Whitehall primary school				
In Conservation Area	No				
In Air Quality Management Area	Adjacent				
Distance to water body	287 - drain				
Flood zone	1				
Previously developed land	Greenfield				
Distance to train station (m)	>2km				
Distance to primary school (m)	103				
Index of multiple deprivation	3				
Mitigation	Mature trees Local Wildlife Site Air Quality Management Area				

983 Hefford Gardens					
Gross area	0.39	Net area	0.39	Net housing	12
Distance to GP (m)	426				
Parks quantity/quality	Sufficient access to greenspace within the ward. No facilities on site				
Sports	No comment				
Distance to Green Wedge (m)	956				
Distance to allotments (m)	720				
Distance to SSSI	>2km				
Distance to Local Wildlife Site (m)	688				
Biodiversity comments	No designation. Trees				
Archaeology comments					
Heritage comments	No comments				
In Conservation Area	No				
In Air Quality Management Area	No				
Distance to water body	195 ditch				
Flood zone	1				
Previously developed land	Greenfield				
Distance to train station (m)	>2km				
Distance to primary school (m)	282				
Index of multiple deprivation	1				
Mitigation					

984 Brex Rise					
Gross area	0.39	Net area		Net housing	11
Distance to GP (m)	709				
Parks quantity/quality	No comment				
Sports	No comment				
Distance to Green Wedge (m)	707				
Distance to allotments (m)	136				
Distance to SSSI	>2km				
Distance to Local Wildlife Site (m)	320				
Biodiversity comments	No designation. Trees				
Archaeology comments	No comment				
Heritage comments	Adjacent the Locally Listed New Parks Reservoir and c. 60 metres from the Locally Listed Western Park				
In Conservation Area	No				
In Air Quality Management Area	Adjacent				
Distance to water body	184 drain				
Flood zone	1				
Previously developed land					
Distance to train station (m)	>2km				
Distance to primary school (m)	363				
Index of multiple deprivation	3				
Mitigation	Air Quality Management Area Trees Locally listed assets				

986 Cuffing Close					
Gross area	0.39	Net area	0.39	Net housing	11
Distance to GP (m)	630				
Parks quantity/quality	No comment				
Sports	No comment				
Distance to Green Wedge (m)	506				
Distance to allotments (m)	267				
Distance to SSSI	>2km				
Distance to Local Wildlife Site (m)	167				
Biodiversity comments	No designation. Trees				
Archaeology comments	No comment				
Heritage comments	No comment				
In Conservation Area	No				
In Air Quality Management Area	No				
Distance to water body	190 drain				
Flood zone	1				
Previously developed land	Parking area				
Distance to train station (m)	>2km				
Distance to primary school (m)	305				
Index of multiple deprivation	3				
Mitigation					

987 Littlegarth					
Gross area	0.39	Net area	0.39	Net housing	12
Distance to GP (m)	577				
Parks quantity/quality	Limited provision of greenspace throughout the ward				
Sports	No comment				
Distance to Green Wedge (m)	1293				
Distance to allotments (m)	1067				
Distance to SSSI	>2km				
Distance to Local Wildlife Site (m)	1189				
Biodiversity comments	No designation. Trees				
Archaeology comments	No comment				
Heritage comments	c. 90 metres form the Grade II Listed and Grade II Registered (Historic Park and Garden) Saffron Hill Cemetery; part of much altered inter-war comprehensive development on site				
In Conservation Area	no				
In Air Quality Management Area	No				
Distance to water body	1037 Saffron Brook				
Flood zone	1				
Previously developed land	Greenfield				
Distance to train station (m)	>2km				
Distance to primary school (m)	218				
Index of multiple deprivation	1				
Mitigation	Green space Heritage assets				



988 Gaunton Road					
Gross area	0.39	Net area	0.39	Net housing	12
Distance to GP (m)	324				
Parks quantity/quality	Mature woodland. However Western Park is nearby				
Sports	No comment				
Distance to Green Wedge (m)	134				
Distance to allotments (m)	651				
Distance to SSSI	>2km				
Distance to Local Wildlife Site (m)	134				
Biodiversity comments	Not designated but heavily vegetated overgrown hedge. Nothing of great arboricultural value.				
Archaeology comments	No comment				
Heritage comments	No comment				
In Conservation Area	No				
In Air Quality Management Area	No				
Distance to water body	203 ditch				
Flood zone	1				
Previously developed land	Greenfield				
Distance to train station (m)	>2km				
Distance to primary school (m)	291				
Index of multiple deprivation	1				
Mitigation	Hedge, woodland				

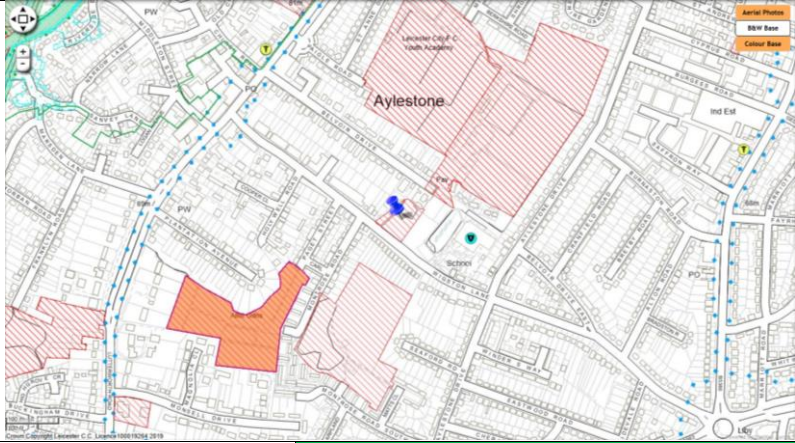
989 Tudor Park					
Gross area	0.38	Net area	0.38	Net housing	11
Distance to GP (m)	384				
Parks quantity/quality	No facilities on site. Some anti-social behaviour issues (drug use). To be considered alongside future plans for the Rally Park.				
Sports	No comments				
Distance to Green Wedge (m)	1757				
Distance to allotments (m)	744				
Distance to SSSI	>2km				
Distance to Local Wildlife Site (m)	154				
Biodiversity comments	BES- forms part of ecological network with Rally Park. Mature trees and shrubs				
Archaeology comments	Monastic sites to the east, Roman road to south, Norfolk Street villa nearby				
Heritage comments	Late Victorian, turn of the century terraced housing along Tudor Road to immediate east				
In Conservation Area	No				
In Air Quality Management Area	Yes				
Distance to water body	160 Old River Soar				
Flood zone	About 65% of site is zone 3a, most of rest is zone 2				
Previously developed land					
Distance to train station (m)	1565				
Distance to primary school (m)	286				
Index of multiple deprivation	1				
Mitigation	Open space Ecological network Nearby heritage and archaeological assets Air Quality Management Area Flooding				

990 Aikman Avenue	
Gross area	Net area
Distance to GP (m)	235
Parks quantity/quality	No comment
Sports	No comment
Distance to Green Wedge (m)	779
Distance to allotments (m)	431
Distance to SSSI	>2km
Distance to Local Wildlife Site (m)	676
Biodiversity comments	Not designated but 50% tree cover
Archaeology comments	Locally listed assets with group value
Heritage comments	Adjacent a comprehensive group of locally listed 1950s council housing blocks, with original setting
In Conservation Area	No
In Air Quality Management Area	No
Distance to water body	1067 ditch
Flood zone	1
Previously developed land	
Distance to train station (m)	>2km
Distance to primary school (m)	510
Index of multiple deprivation	1
Mitigation	Tree cover Locally listed housing

991 Greenacre Drive					
Gross area	0.38	Net area	0.38	Net housing	11
Distance to GP (m)	800				
Parks quantity/quality	No comment				
Sports	No comment				
Distance to Green Wedge (m)	1612				
Distance to allotments (m)	218				
Distance to SSSI	>2km				
Distance to Local Wildlife Site (m)	558				
Biodiversity comments	Not designated but 50% tree cover				
Archaeology comments	No comment				
Heritage comments	No comment				
In Conservation Area	No				
In Air Quality Management Area	No				
Distance to water body	967 Bushby Brook				
Flood zone	1				
Previously developed land	Greenfield				
Distance to train station (m)	>2km				
Distance to primary school (m)	517				
Index of multiple deprivation	2				
Mitigation	Trees				

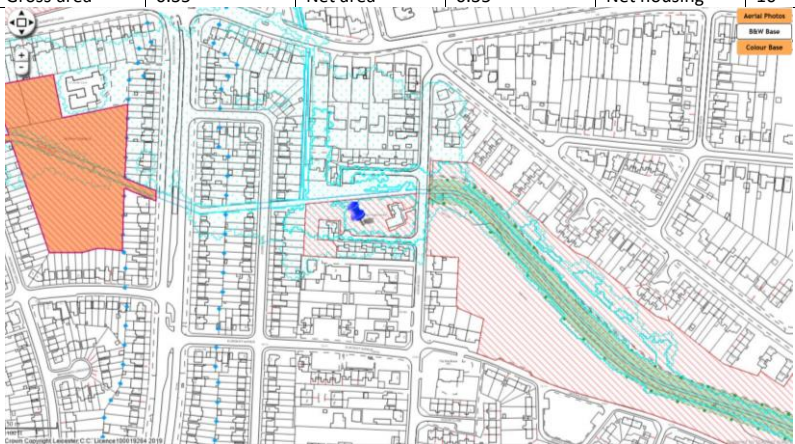
993 Chapel Lane Gardens / Church Lane					
Gross area	0.38	Net area	0.38	Net housing	12
Distance to GP (m)	622				
Parks quantity/quality	Provides access to formal greenspace. Play area on site, more formal gardens. Site contained within Knighton Conservation Area.				
Sports	No loss of pitches				
Distance to Green Wedge (m)	789				
Distance to allotments (m)	412				
Distance to SSSI	>2km				
Distance to Local Wildlife Site (m)	128				
Biodiversity comments	BES - small POS with intrinsic wildlife value and input from local community.				
Archaeology comments	Historic medieval village core; area includes Grade II building; BES				
Heritage comments	Grade II Listed Thatched Cottage, dated to 17th century, within Knighton CA, adjacent the Grade II Listed Church lane Gardens; adding to the setting of the designated assets and locality - mitigation not possible				
In Conservation Area	Yes				
In Air Quality Management Area	No				
Distance to water body	Saffron Brook <50m at nearest point				
Flood zone	15% on southern border of site is zone 2				
Previously developed land					
Distance to train station (m)	>2km				
Distance to primary school (m)	361				
Index of multiple deprivation	>3				
Mitigation	Green space Play area Conservation Area Archaeological and heritage assets Saffron Brook re. contamination, runoff				

994 Martin Street open space		Net area	Net housing
Gross area	0.37		
Distance to GP (m)	420		
Parks quantity/quality	Ward deficient in greenspace. No facilities on site		
Sports	No loss of pitches		
Distance to Green Wedge (m)	1580		
Distance to allotments (m)	1185		
Distance to SSSI	>2km		
Distance to Local Wildlife Site (m)	1378		
Biodiversity comments	Not designated but 50% tree cover		
Archaeology comments	No comment		
Heritage comments	Inter-war Hosiery Factory to the immediate north-west, of local and architectural merit		
In Conservation Area	no		
In Air Quality Management Area	No		
Distance to water body	358 Willow Brook		
Flood zone	Access routes zone 3b, almost all of site zone 3a		
Previously developed land			
Distance to train station (m)	1754		
Distance to primary school (m)	322		
Index of multiple deprivation	2		
Mitigation	Green space Tree cover Flooding		

995 Aylestone (6)					
Gross area	0.37	Net area	0.37	Net housing	11
					
Distance to GP (m)	405				
Parks quantity/quality	No comment				
Sports	Informal football use, with grass 5v5 pitch. As pitch is marked out SE consultation will likely be needed.				
Distance to Green Wedge (m)	822				
Distance to allotments (m)	213				
Distance to SSSI	>2km				
Distance to Local Wildlife Site (m)	740				
Biodiversity comments	Not designated but 50% tree cover				
Archaeology comments	Former sand pit				
Heritage comments	Adjacent the Locally Listed Wigston Lane Young People's Home, defining its setting and character				
In Conservation Area	No				
In Air Quality Management Area	No				
Distance to water body	73 pond				
Flood zone	1				
Previously developed land	Greenfield				
Distance to train station (m)	>2km				
Distance to primary school (m)	125				
Index of multiple deprivation	2				
Mitigation	Trees Setting of locally listed building				

996 St. Deny's Road					
Gross area	0.36	Net area	0.36	Net housing	11
Distance to GP (m)	577				
Parks quantity/quality	Urban buzz meadow present on site				
Sports	No comment				
Distance to Green Wedge (m)	1334				
Distance to allotments (m)	721				
Distance to SSSI	>2km				
Distance to Local Wildlife Site (m)	31 across road				
Biodiversity comments	Two Local Wildlife Site veteran trees on east road verge. Goodwood Rd roadside verge meadows further south. Significant oak to northern end, no great value of trees fronting 58-64.				
Archaeology comments	No archaeological concerns				
Heritage comments	Adjacent the Locally Listed Whitehall Primary School, c.150 metres from the Evington Village CA				
In Conservation Area	no				
In Air Quality Management Area	adjacent				
Distance to water body	251 ditch				
Flood zone	1				
Previously developed land	Greenfield				
Distance to train station (m)	>2km				
Distance to primary school (m)	154				
Index of multiple deprivation	>3				
Mitigation	Veteran trees, meadow				



998 Ocean Road					
Gross area	0.35	Net area	0.35	Net housing	10
					
Distance to GP (m)	509				
Parks quantity/quality	No comment				
Sports	No comment				
Distance to Green Wedge (m)	1199				
Distance to allotments (m)	182				
Distance to SSSI	>2km				
Distance to Local Wildlife Site (m)	79				
Biodiversity comments	BES - Bushby Brook - adjacent to Ocean Rd OS LWS				
Archaeology comments	No archaeological concerns but BES				
Heritage comments	No comment				
In Conservation Area	No				
In Air Quality Management Area	No				
Distance to water body	0 – adjacent Bushby Brook				
Flood zone	About 1/3 of site and site access are zone 3b. The rest is 3a.				
Previously developed land	Greenfield				
Distance to train station (m)	>2km				
Distance to primary school (m)	747				
Index of multiple deprivation	3				
Mitigation	Flooding Bushby Brook re. contamination, runoff Local Wildlife Site				

999 Marvin Close					
Gross area	0.35	Net area	0.35	Net housing	11
Distance to GP (m)	380				
Parks quantity/quality	Access to Western Park within the ward. Poor quality. No facilities. Very steep site.				
Sports	No comments				
Distance to Green Wedge (m)	922				
Distance to allotments (m)	127				
Distance to SSSI	>2km				
Distance to Local Wildlife Site (m)	470				
Biodiversity comments	No designations. Trees. Very steep banks				
Archaeology comments	No comment				
Heritage comments	No comment				
In Conservation Area	No				
In Air Quality Management Area	No				
Distance to water body	250 ditch				
Flood zone	1				
Previously developed land					
Distance to train station (m)	>2km				
Distance to primary school (m)	206				
Index of multiple deprivation	1				
Mitigation	Steep site				

**Commented [A5]:** Rest of App C2 transferred to App C3 as file getting too large