
The Indices of Deprivation 2019: Map Pack

Leicester deprivation maps and domain summaries

Division of Public Health – November 2019

Leicester City Council



Indices of deprivation 2019: Map Pack

The English Indices of Deprivation 2019 measures deprivation across the country at a small area level (Lower Super Output Area). The main measure is the Index of Multiple Deprivation (IMD) and it is composed of seven domains; **Income, employment, education, health, crime, barriers to housing and services, and living environment.**

In addition to these there are specific income deprivation measures for **children** and **older people**. There are also further sub-domains for education (**child education** and **adult skills**), barriers to housing and services (**geographical** and **wider barriers**), and living environment (**indoor** and **outdoor**)

Contents

A summary of the composition, weighting and basket of indicators used to develop the Indices of Deprivation 2019: [Page 3](#)

Maps for the IMD, each domain, the supplementary indices on children and older people, and the sub-domains: [Page 5](#)

Each map will include a short definition, the Leicester local authority summary rank (out of 317 English LA's), and the percentage of the Leicester population that reside in the most deprived 20% areas nationally. Middle Super Output Area (MSOA) labels are included on the map, there are 37 MSOAs and each has been given a local neighbourhood name.

Links to further information and technical notes. [Page 21](#)

Indices of deprivation 2019: Domains

The Index of Multiple Deprivation (IMD) is composed of seven domains and weighted accordingly.

Each of these domains is based on a basket of indicators. As far as is possible, each indicator is based on data from the most recent time point available.

Income
(22.5%)



Measures the proportion of the population experiencing deprivation relating to low income

Employment
(22.5%)



Measures the proportion of the working age population in an area involuntarily excluded from the labour market

Education
(13.5%)



Measures the lack of attainment and skills in the local population

Health
(13.5%)



Measures the risk of premature death and the impairment of quality of life through poor physical or mental health

Supplementary Indices



Income Deprivation Affecting Children Index (IDACI)
measures the proportion of all children aged 0 to 15 living in income deprived families



Income Deprivation Affecting Older People Index (IDAOP)
measures the proportion of those aged 60+ who experience income deprivation

Crime
(9.3%)



Measures the risk of personal and material victimisation at local level

Barriers to Housing & Services
(9.3%)



Measures the physical and financial accessibility of housing and local services

Living Environment
(9.3%)



Measures the quality of both the 'indoor' and 'outdoor' local environment

Income deprivation 22.5

Employment deprivation 22.5

Education, skills & training 13.5

Health deprivation 13.5

Crime 9.3

Barriers to services 9.3

Living environment 9.3

- Adults and children in Income Support families
- Adults and children in income-based Jobseeker's Allowance families
- Adults and children in income-based Employment and Support Allowance families
- Adults and children in Pension Credit (Guarantee) families
- Adults and children in Working Tax Credit and Child Tax Credit families, below 60% median income not already counted
- Asylum seekers in England in receipt of subsistence support, accommodation support, or both
- Adults and children in Universal Credit families where no adult is in 'Working - no requirements' conditionality regime ++

- Claimants of Jobseeker's Allowance, aged 18-59/64
- Claimants of Employment and Support Allowance, aged 18-59/64
- Claimants of Incapacity Benefit, aged 18-59/64
- Claimants of Severe Disablement Allowance, aged 18-59/64
- Claimants of Carer's Allowance, aged 18-59/64
- Claimants of Universal Credit in the 'Searching for work' and 'No work requirements' conditionality groups ++

- Key Stage 2 attainment: scaled scores
 - Key Stage 4 attainment: average capped points score
 - Secondary school absence
 - Staying on in education post 16
 - Entry to higher education
- Children & Young People

- Adults with no or low qualifications, aged 25-59/64
 - Adults who cannot speak English or cannot speak English well, aged 25-59/64
- Adult Skills

- Years of potential life lost
- Comparative illness and disability ratio **
- Acute morbidity
- Mood and anxiety disorders **

- Recorded crime rates for:
- Violence
 - Burglary
 - Theft
 - Criminal damage

- Road distance to a:
- Post office
 - Primary school
 - General store or supermarket
 - GP surgery
- Geographical Barriers

- Household overcrowding
 - Homelessness
 - Housing affordability
- Wider Barriers

- Houses without central heating
 - Housing in poor condition
 - Air quality
 - Road traffic accidents
- Indoors Living Environment
- Outdoors Living Environment

Index of multiple deprivation

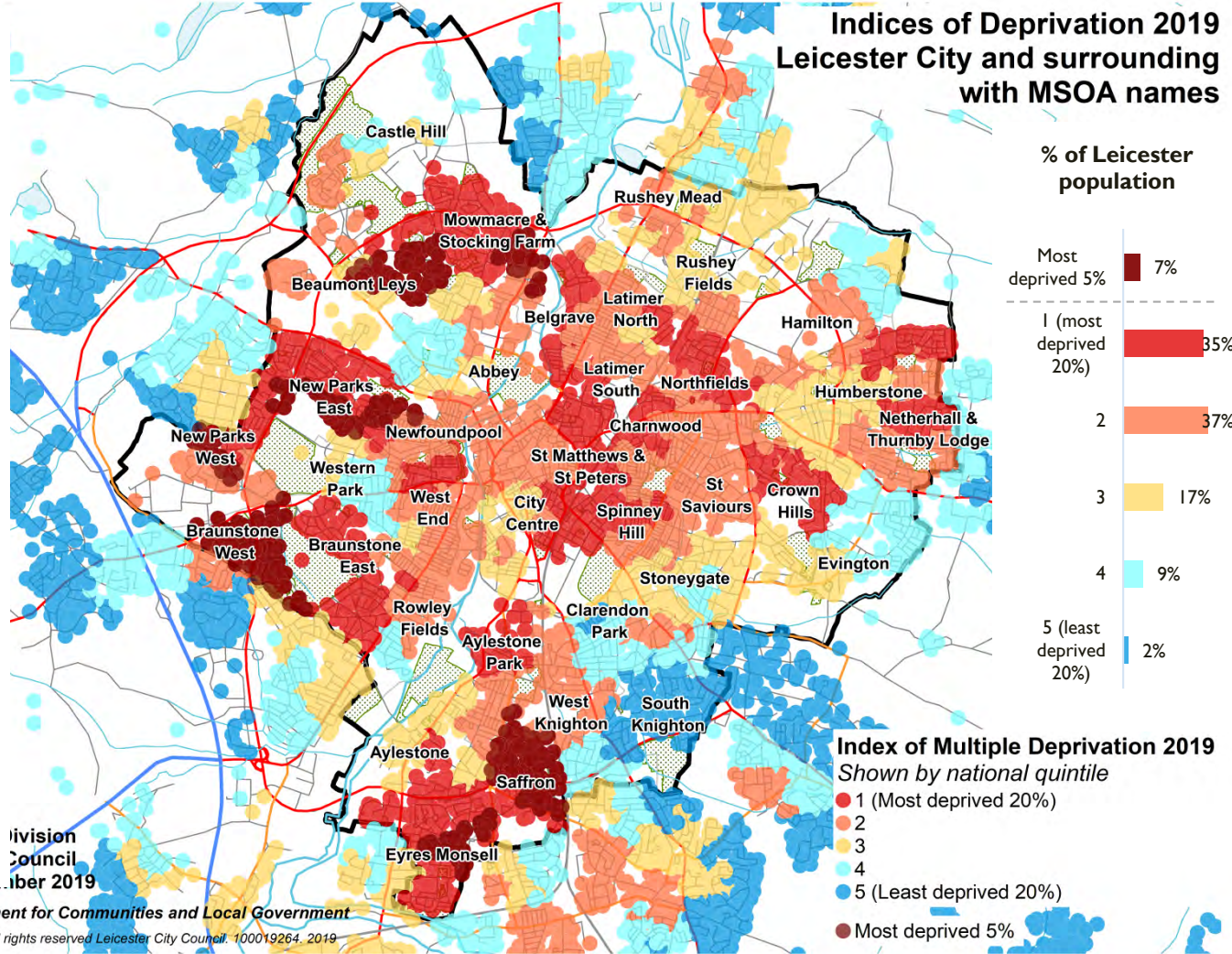
The Index of Multiple Deprivation 2019 combines information from the seven domains to produce an overall relative measure of deprivation.

Leicester is ranked 32nd most deprived local authority for the Index of Multiple Deprivation.

7% of Leicester's population reside in the most deprived 5% of areas nationally.

35% of the population reside in the most deprived 20% of areas nationally.

Indices of Deprivation 2019 Leicester City and surrounding with MSOA names



Income deprivation

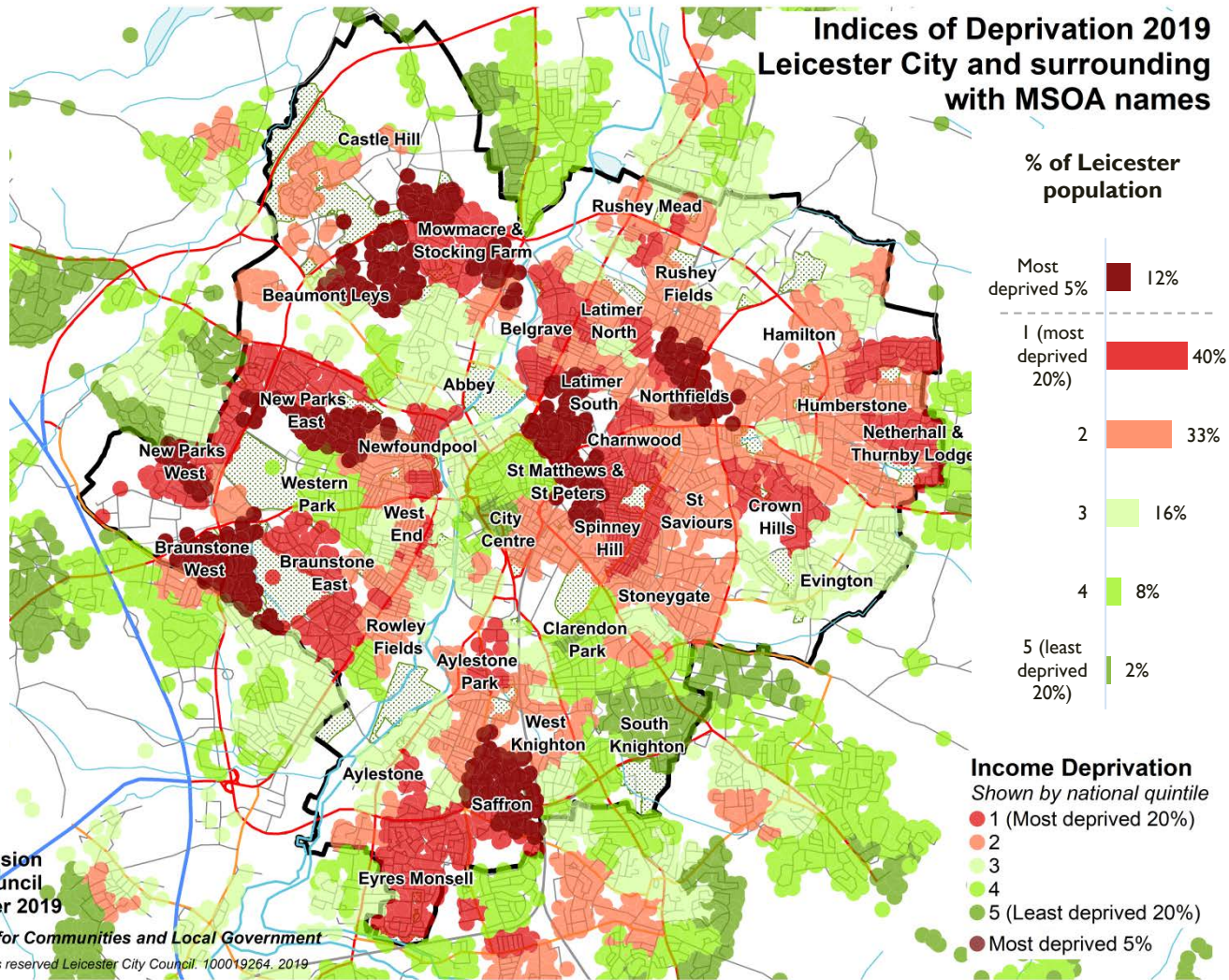
This measures the proportion of the population in an area experiencing deprivation relating to low income.

Leicester is ranked 18th most deprived local authority for Income Deprivation.

12% of Leicester's population reside in the most deprived 5% of areas nationally for income deprivation.

40% of the population reside in the most deprived 20% of areas nationally for income deprivation.

Indices of Deprivation 2019 Leicester City and surrounding with MSOA names



Public Health Division
Leicester City Council
Created: November 2019

Source: Department for Communities and Local Government

(c) Crown copyright. All rights reserved Leicester City Council. 100019264. 2019

Income deprivation affecting children index:

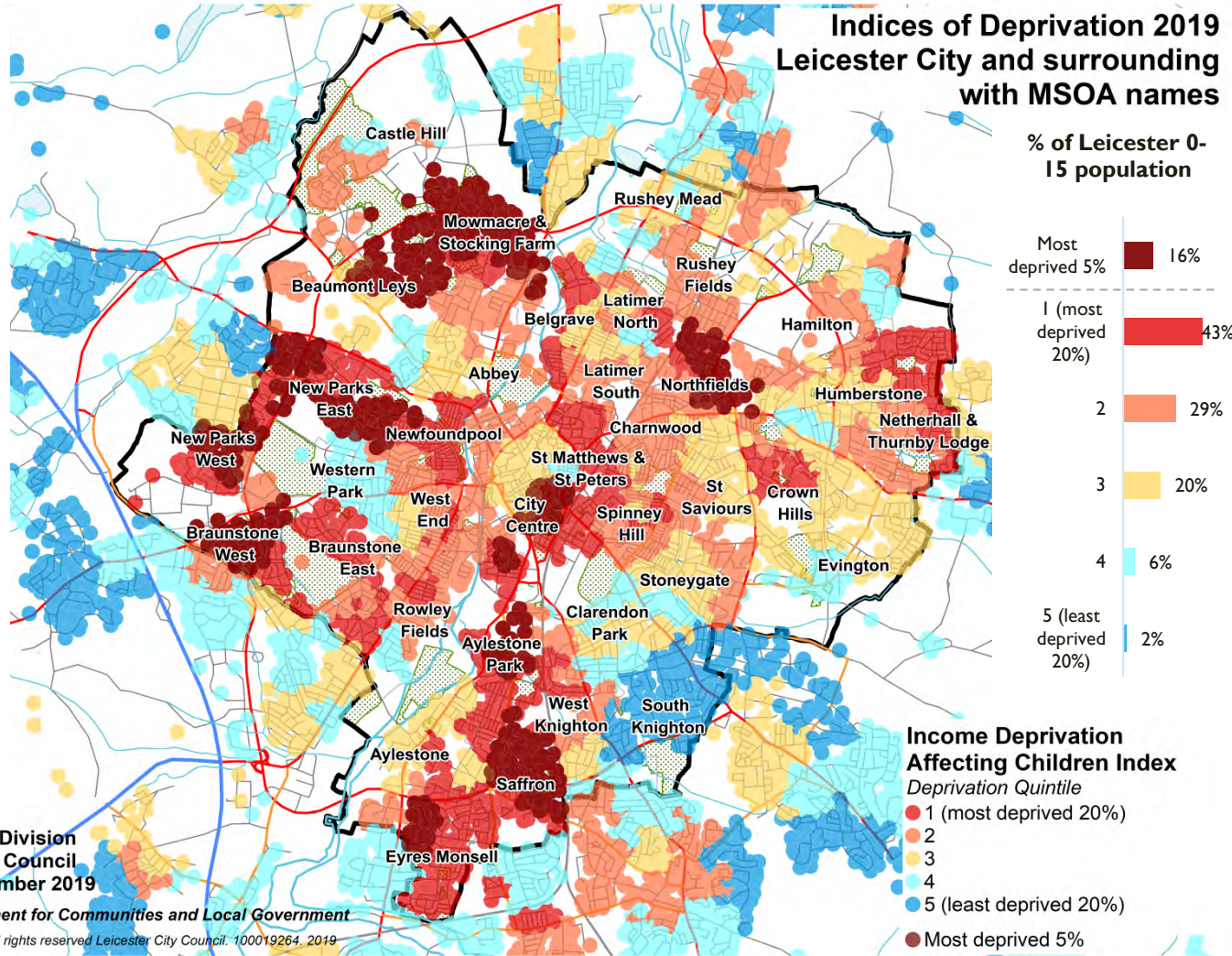
This measures the proportion of all children aged 0 to 15 living in income deprived families.

Leicester is ranked 26th most deprived local authority for Income Deprivation Affecting Children.

16% of Leicester's 0 to 15 year olds reside in the most deprived 5% of areas nationally.

43% of 0 to 15 year olds reside in the most deprived 20% of areas nationally.

Indices of Deprivation 2019 Leicester City and surrounding with MSOA names



Public Health Division
Leicester City Council
Created: November 2019

Source: Department for Communities and Local Government

(c) Crown copyright. All rights reserved Leicester City Council. 100019264. 2019

Income deprivation affecting older people index:

This measures the proportion of all those aged 60 or over who experience income deprivation.

Leicester is ranked 10th most deprived local authority for Income Deprivation Affecting Older People.

21% of Leicester's 60+ population reside in the most deprived 5% of areas nationally.

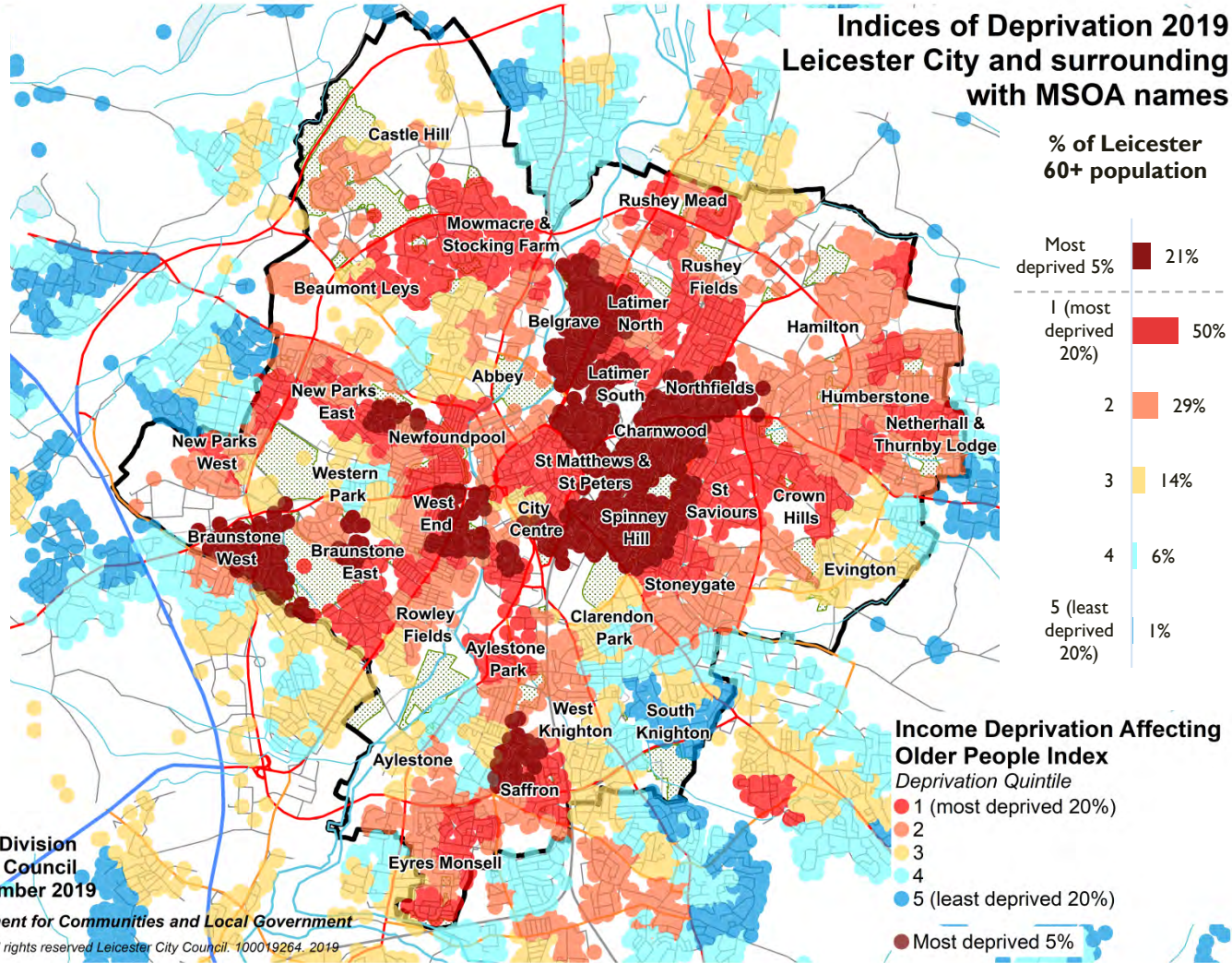
50% of Leicester's 60+ population year olds reside in the most deprived 20% of areas nationally.

Public Health Division
Leicester City Council
Created: November 2019

Source: Department for Communities and Local Government

(c) Crown copyright. All rights reserved Leicester City Council. 100019264. 2019

Indices of Deprivation 2019 Leicester City and surrounding with MSOA names



Employment deprivation

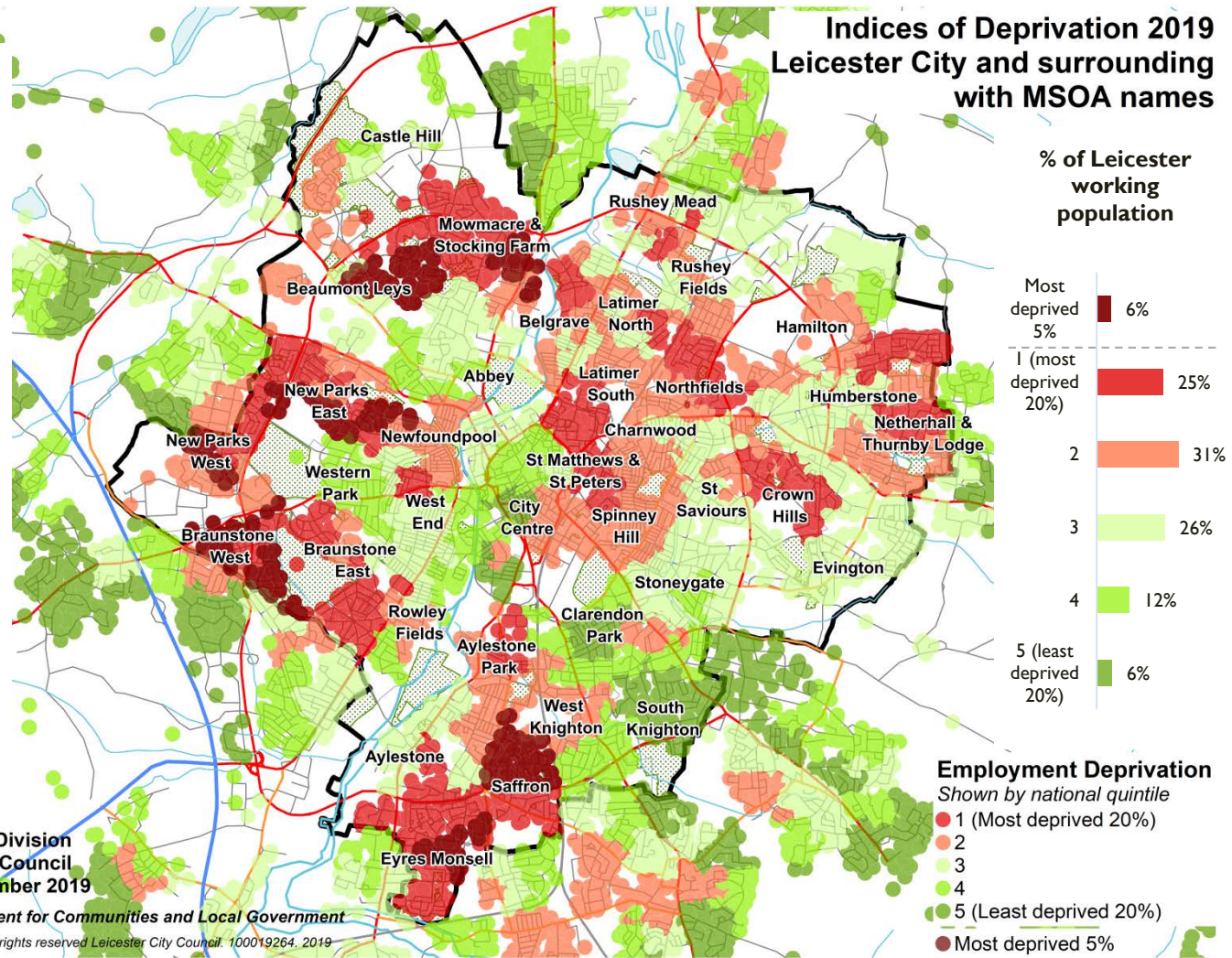
This measures the proportion of the working-age population in an area involuntarily excluded from the labour market.

Leicester is ranked 67th most deprived local authority for Employment Deprivation.

6% of Leicester's working age population reside in the most deprived 5% of areas nationally.

25% of the working age population reside in the most deprived 20% of areas nationally.

Indices of Deprivation 2019 Leicester City and surrounding with MSOA names



Public Health Division
Leicester City Council
Created: November 2019

Source: Department for Communities and Local Government

(c) Crown copyright. All rights reserved Leicester City Council. 100019264. 2019

Education, skills & training deprivation

This measures the lack of attainment and skills in the local population. It is designed to reflect the educational disadvantage within an area by measuring both children's attainment and the lack of qualifications in the working age population.

Leicester is ranked 14th most deprived local authority for Education, skills & training deprivation.

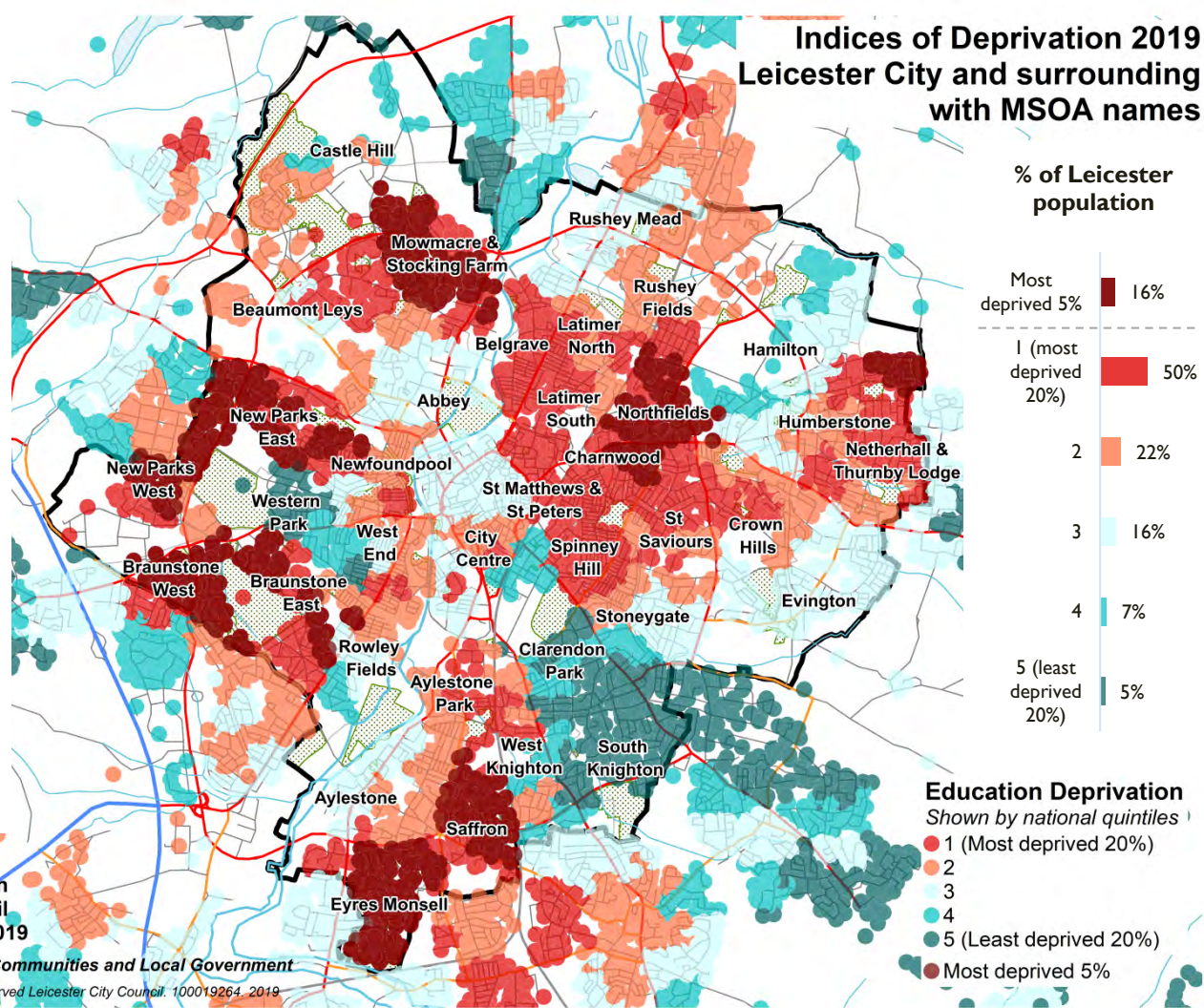
50% of Leicester's population reside in the most deprived 20% of areas nationally for education deprivation.

Public Health Division
Leicester City Council
Created: November 2019

Source: Department for Communities and Local Government

(c) Crown copyright. All rights reserved Leicester City Council. 100019264. 2019

Indices of Deprivation 2019 Leicester City and surrounding with MSOA names



Education: Children & young people sub domain

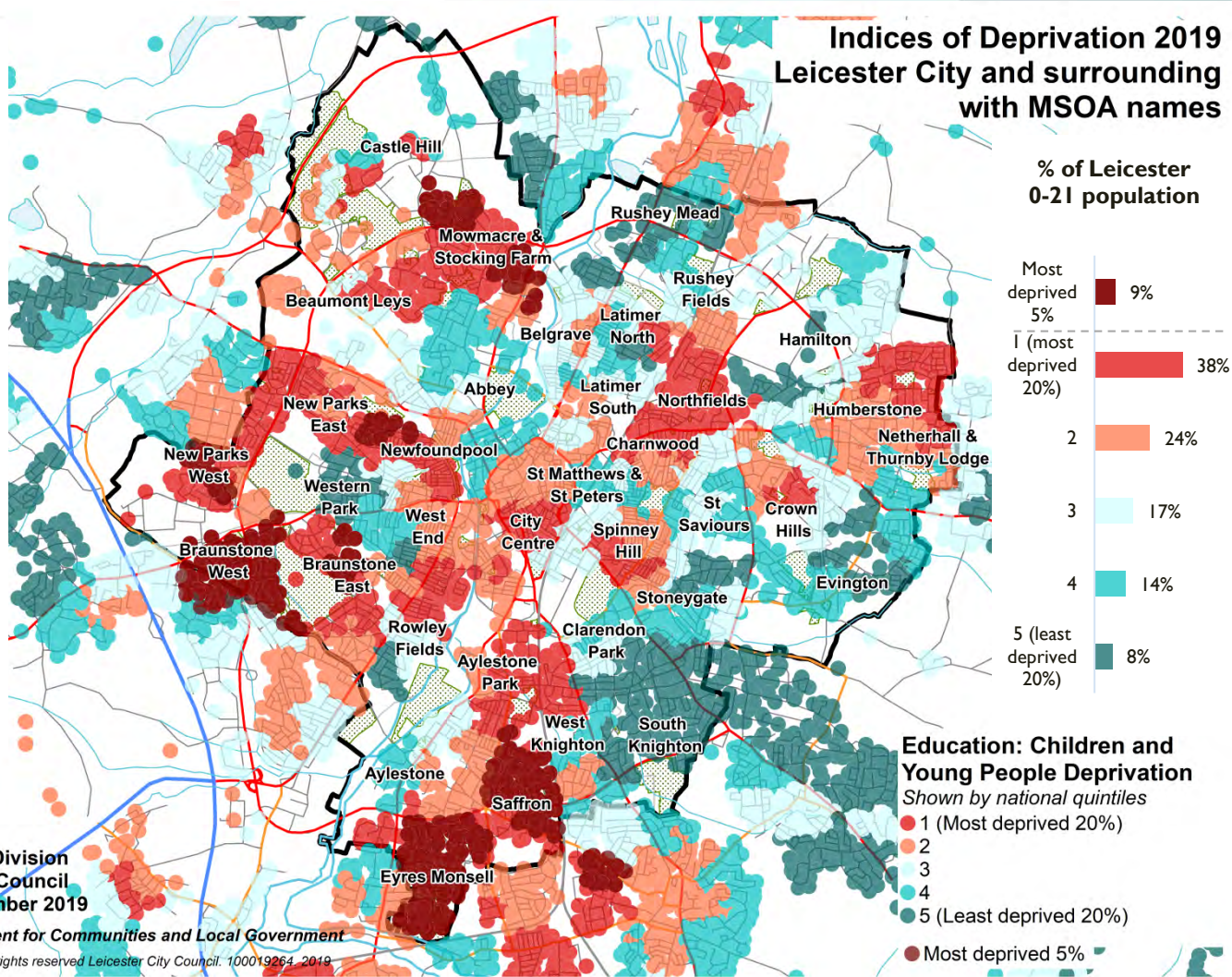
This sub domain relates to children and young people's attainment.

A local authority summary is not calculated for sub-domains.

9% of Leicester's 0 to 21 year olds reside in the most deprived 5% of areas nationally.

38% of 0 to 15 year olds reside in the most deprived 20% of areas nationally.

Indices of Deprivation 2019 Leicester City and surrounding with MSOA names



Public Health Division
Leicester City Council
Created: November 2019

Source: Department for Communities and Local Government

(c) Crown copyright. All rights reserved Leicester City Council. 100019264. 2019

Education: Adults skills sub domain

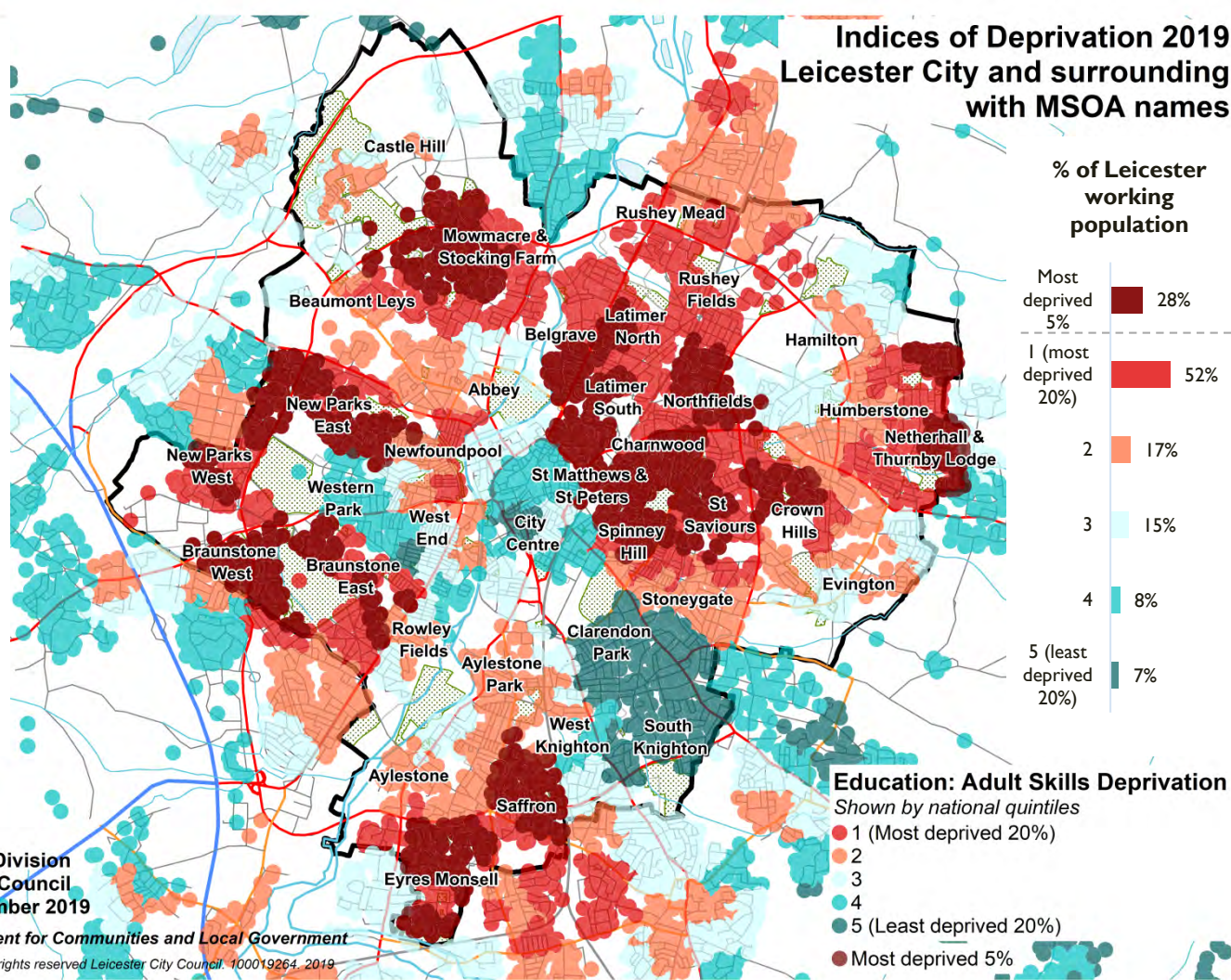
This relates to adult skills and qualifications in the working age population.

A local authority summary is not calculated for sub-domains.

28% of Leicester's working age population reside in the most deprived 5% of areas nationally.

25% of the working age population reside in the most deprived 20% of areas nationally

Indices of Deprivation 2019 Leicester City and surrounding with MSOA names



Public Health Division
Leicester City Council
Created: November 2019

Source: Department for Communities and Local Government

(c) Crown copyright. All rights reserved Leicester City Council. 100019264. 2019

Health deprivation & disability

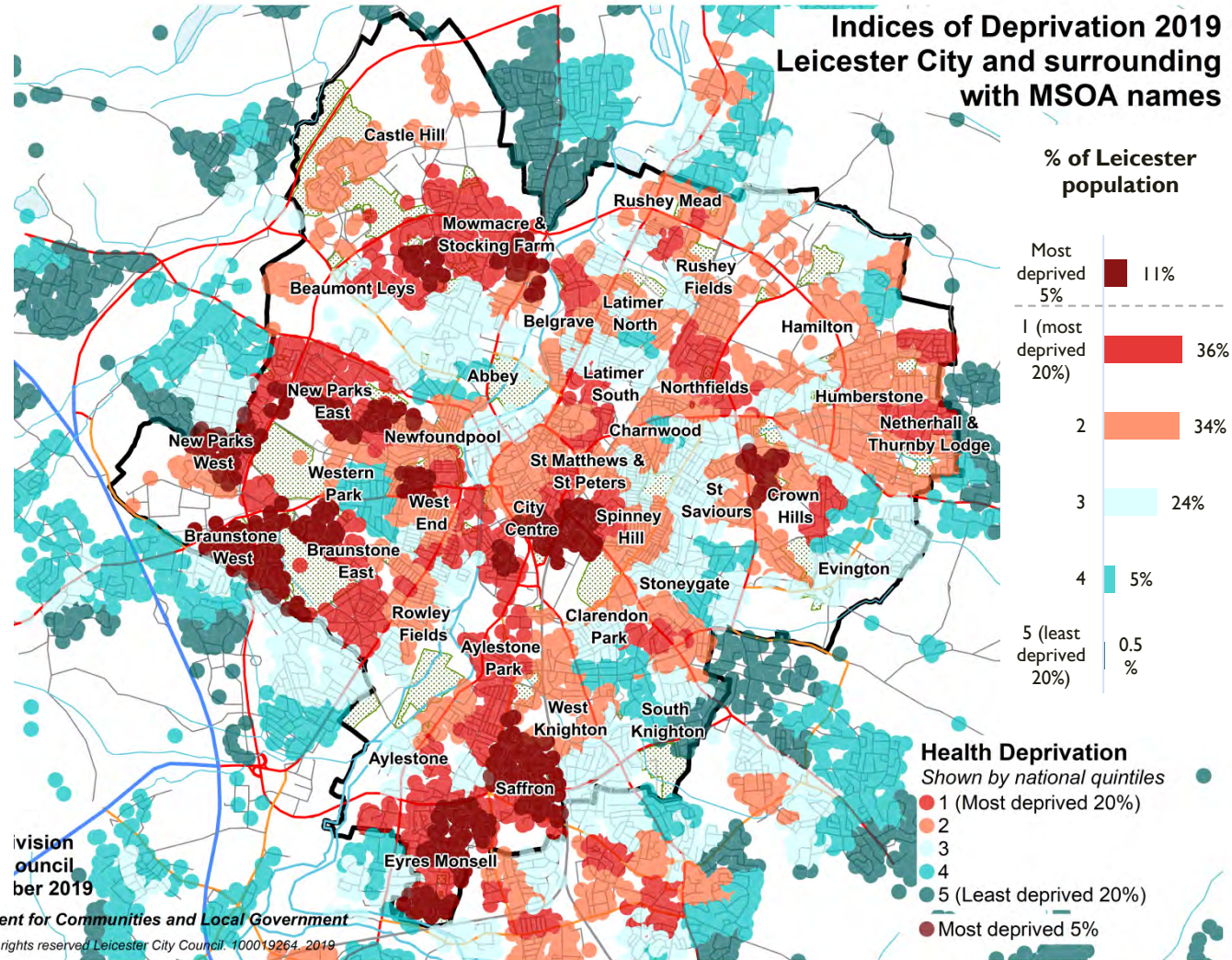
This measures the risk of premature death and the impairment of quality of life through poor physical or mental health.

Leicester is ranked 49th most deprived local authority for Health Deprivation and Disability.

11% of Leicester's population reside in the most deprived 5% of areas nationally for health deprivation.

36% of Leicester's population reside in the most deprived 20% of areas nationally.

Indices of Deprivation 2019 Leicester City and surrounding with MSOA names



Source: Department for Communities and Local Government

(c) Crown copyright. All rights reserved Leicester City Council. 100019264. 2019

Crime deprivation

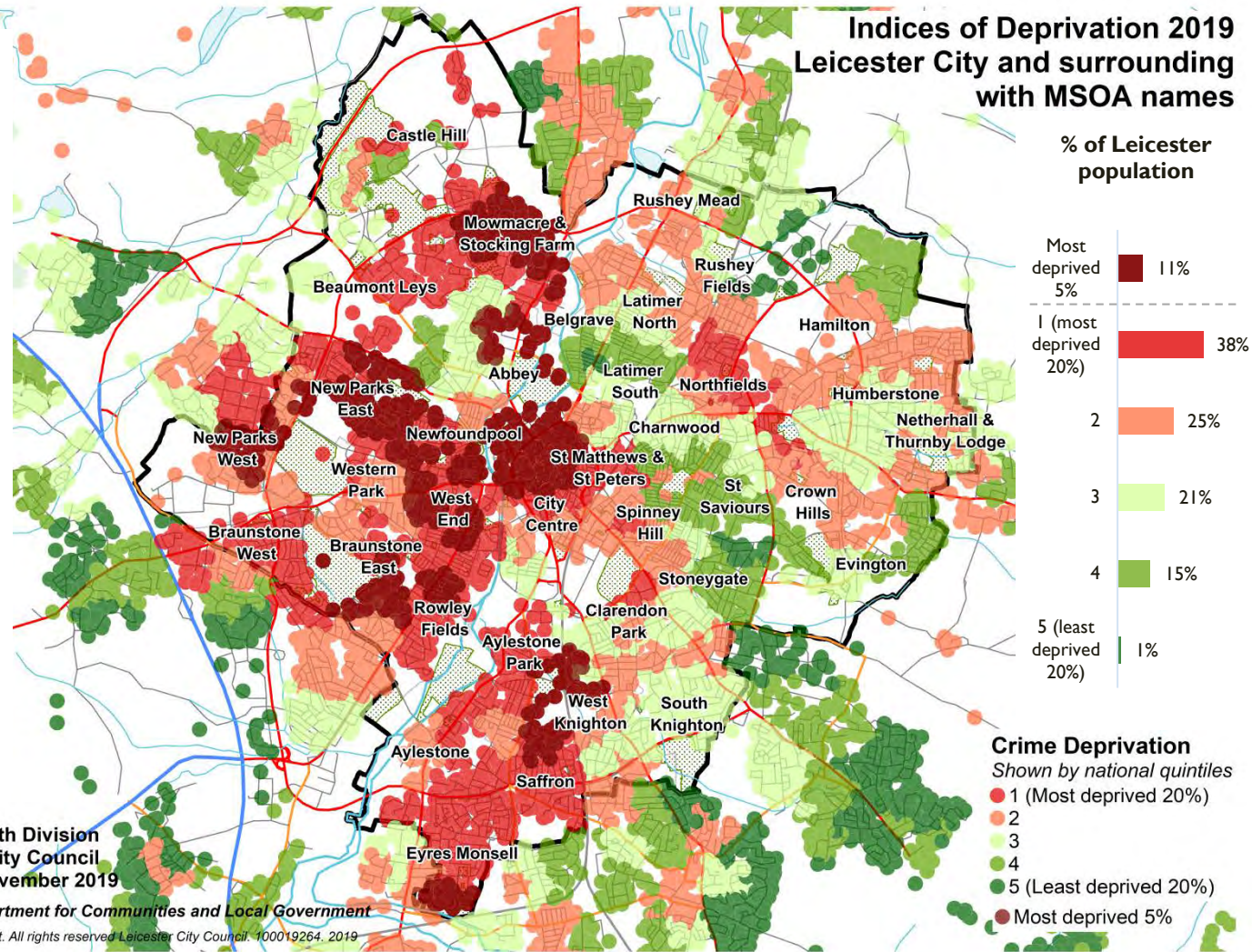
This measures the risk of personal and material victimisation at local level.

Leicester is ranked 37th most deprived local authority for Crime Deprivation.

11% of Leicester's population reside in the most deprived 5% of areas nationally.

38% of Leicester's population reside in the most deprived 20% of areas nationally for crime deprivation.

Indices of Deprivation 2019 Leicester City and surrounding with MSOA names



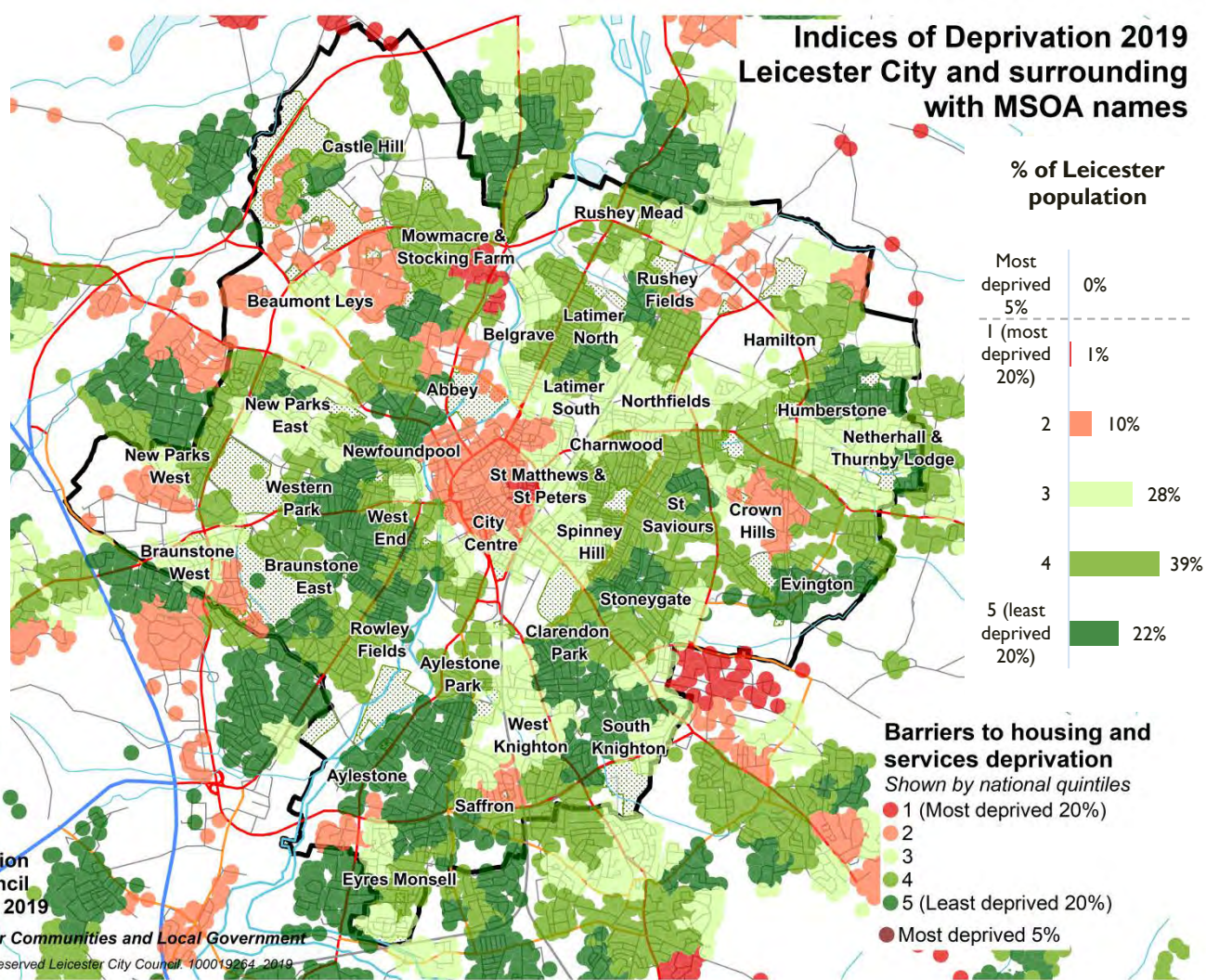
Barriers to housing and services deprivation

This measures the physical and financial accessibility of housing and local services.

Leicester is ranked 254th most deprived local authority for Barriers to housing and services deprivation. Urban areas are less deprived for this domain.

Less than 1% of the population reside in the most deprived 20% of areas nationally.

Indices of Deprivation 2019 Leicester City and surrounding with MSOA names



Public Health Division
Leicester City Council
Created: November 2019

Source: Department for Communities and Local Government

(c) Crown copyright. All rights reserved Leicester City Council. 100019264. 2019

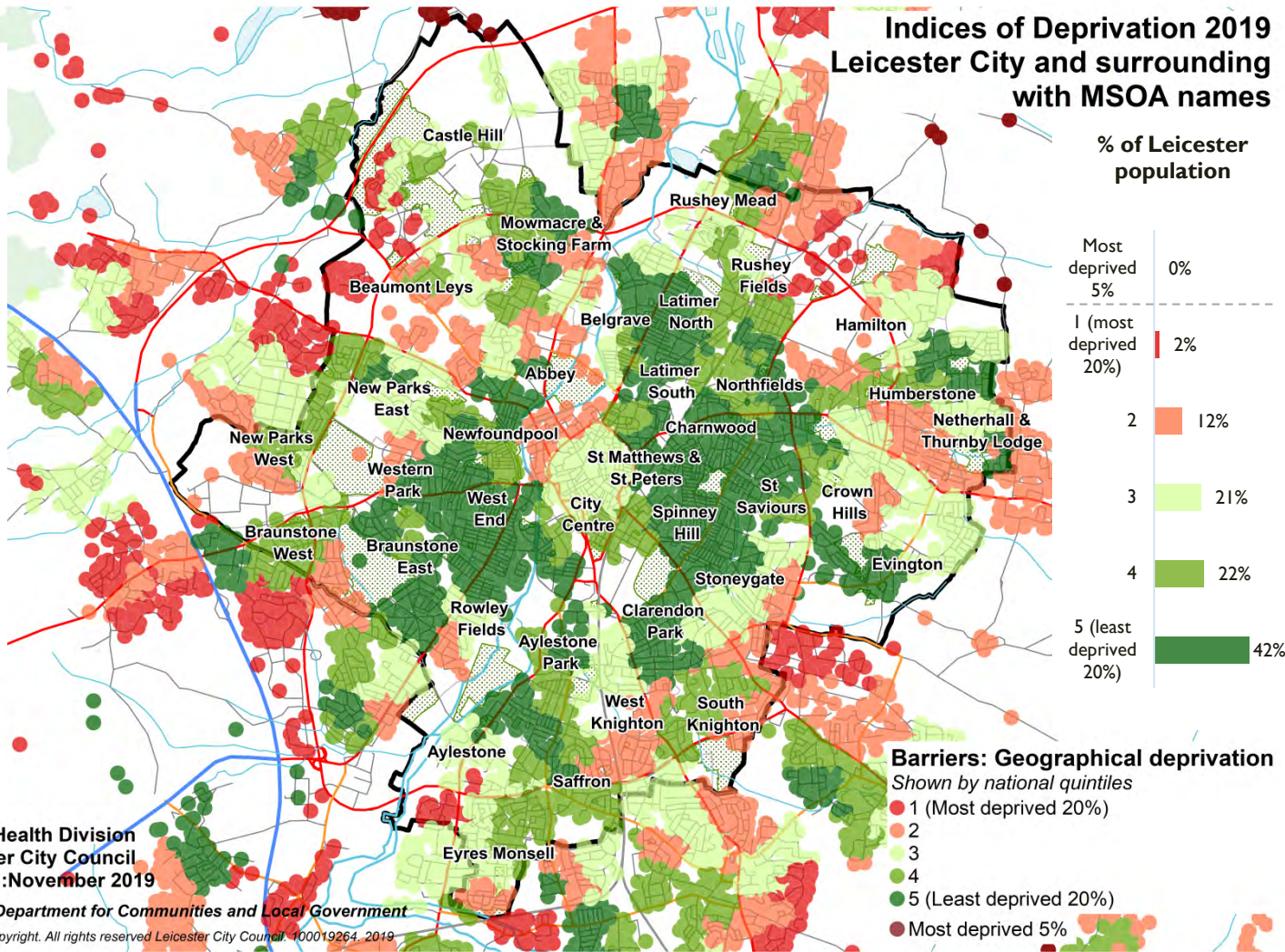
Barriers: Geographical sub domain

This sub domain relates to the physical proximity of local services.

A local authority summary is not calculated for sub-domains.

The majority of Leicester residents do not experience geographical barriers to local services.

Indices of Deprivation 2019 Leicester City and surrounding with MSOA names



Public Health Division
Leicester City Council
Created: November 2019

Source: Department for Communities and Local Government

(c) Crown copyright. All rights reserved Leicester City Council. 100019264. 2019

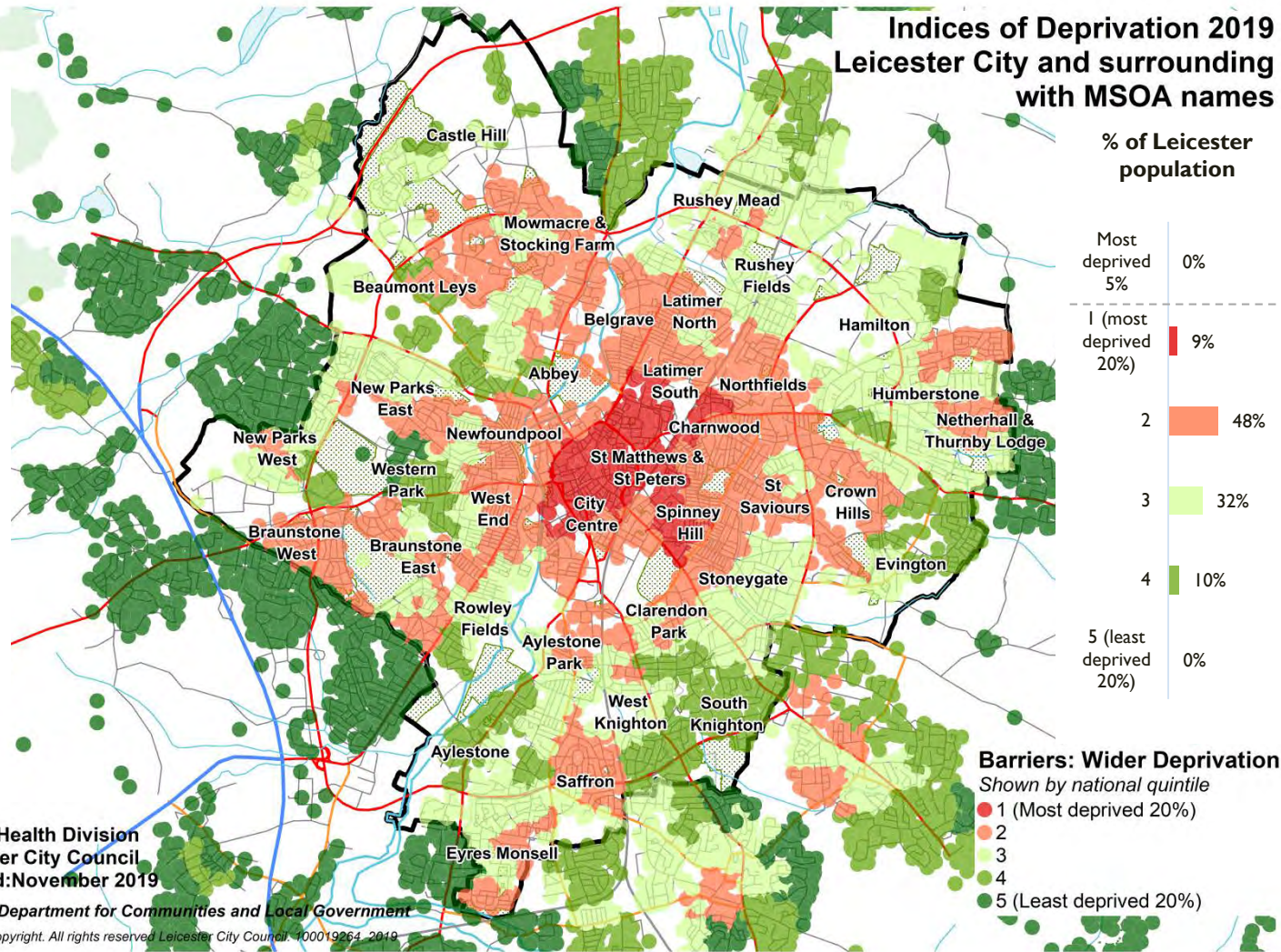
Barriers: Wider sub domain

This sub domain relates to access to housing, such as affordability and overcrowding.

A local authority summary is not calculated for sub-domains.

9% of residents reside in the 20% most deprived areas nationally for wider barriers to housing.

Indices of Deprivation 2019 Leicester City and surrounding with MSOA names



Public Health Division
Leicester City Council
Created: November 2019

Source: Department for Communities and Local Government

(c) Crown copyright. All rights reserved Leicester City Council. 100019264. 2019

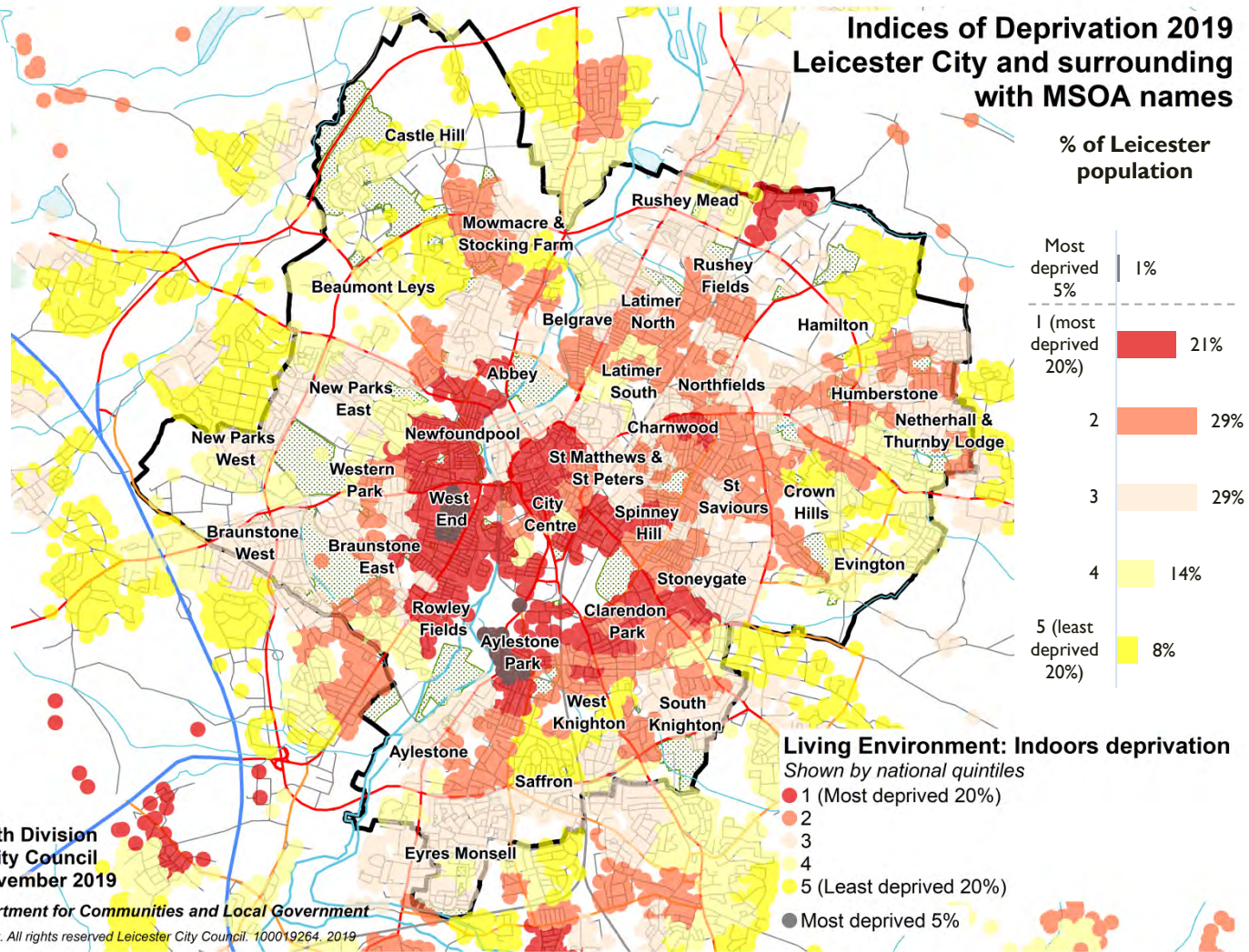
Living environment: indoors sub domain

The 'indoors' living environment measures the quality of housing. This includes whether households have central heating or meet the decent homes standard.

A local authority summary is not calculated for sub-domains.

21% of Leicester's population reside in the most deprived 20% of areas nationally for Indoor Living Environment.

Indices of Deprivation 2019 Leicester City and surrounding with MSOA names



Public Health Division
Leicester City Council
Created: November 2019

Source: Department for Communities and Local Government

(c) Crown copyright. All rights reserved Leicester City Council. 100019264. 2019

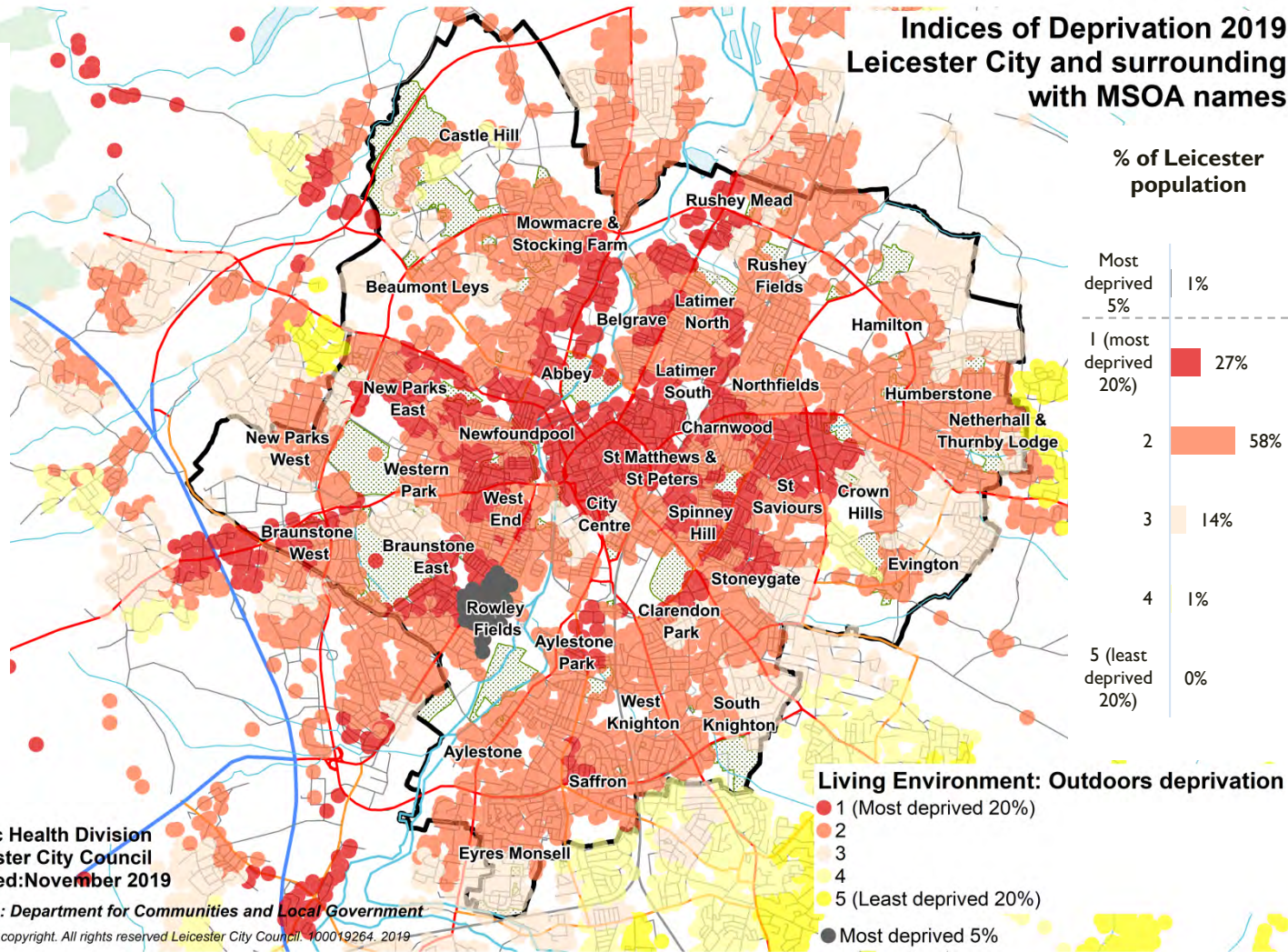
Living environment: outdoors sub domain

The 'outdoors' living environment contains measures of air quality and road traffic accidents.

A local authority summary is not calculated for sub-domains.

27% of Leicester's population reside in the most deprived 20% of areas nationally for Outdoor Living Environment.

Indices of Deprivation 2019 Leicester City and surrounding with MSOA names



Public Health Division
Leicester City Council
Created: November 2019

Source: Department for Communities and Local Government

(c) Crown copyright. All rights reserved Leicester City Council. 100019264. 2019

Indices of deprivation 2019: Further information

- Further information (including technical notes) on the Indices of Deprivation 2019:

<https://www.gov.uk/government/statistics/english-indices-of-deprivation-2019>

<https://www.gov.uk/government/publications/english-indices-of-deprivation-2019-technical-report>

- Further mapping resources on the Indices of Deprivation 2019:

<https://www.gov.uk/guidance/english-indices-of-deprivation-2019-mapping-resources>

- Further analysis of deprivation in Leicester:

<https://www.leicester.gov.uk/your-council/policies-plans-and-strategies/health-and-social-care/data-reports-information/local-profiles-and-poverty-in-leicester/>

Any comments or questions about this briefing to:

Gurjeet Rajania, Public Health Analyst, Leicester City Council

Gurjeet.rajania@leicester.gov.uk